

Safety Tools & Products

Safety Tools to 1000 VAC

Insulating Products
to 40,000 VAC

FR Clothing for all Hazard Risk Categories



CIP
Certified Insulated Products



NFPA 70E COMPLIANCE GUIDE

This guide shall only be used in conjunction with performing the necessary calculations contained in a flash hazard analysis to determine the proper cal/cm². If the results of the calculations exceed the cal/cm² that correspond to the HRC found on this guide, you must use clothing that complies with the calculation.

Panelboards Rated 240 V and Below - Notes 1 and 3				600 V Class Switchgear (with power circuit breakers or fused switches) - Notes 5 and 6				NEMA E2 (fused contactor) Motor Starters, 2.3 kV through 7.2 kV			
TASK (equipment is energized & work is done within the flash protection boundary)	V-Rated Gloves	V-Rated Tools	HRC	TASK (equipment is energized & work is done within the flash protection boundary)	V-Rated Gloves	V-Rated Tools	HRC	TASK (equipment is energized & work is done within the flash protection boundary)	V-Rated Gloves	V-Rated Tools	HRC
Circuit Breaker (CB) or fused switch operation with covers on			0	CB or fused switch operation with enclosure doors closed			0	Contactor operation with enclosure doors closed			0
CB or fused switch operation with covers off			0	Reading a panel meter while operating a meter switch			0	Reading a panel meter while operating a meter switch			0
Opening hinged covers (to expose bare, energized parts)			0	Work on control circuits with energized parts 120 V or below, exposed	Y	Y	0	Work on control circuits with energized parts 120 V or below, exposed	Y	Y	0
Removal of bolted covers (to expose bare, energized parts)			1	CB or fused switch operation with enclosure doors open			1	Insertion or removal (racking) of starters from cubicles, doors closed			2
Remove or Install CB's or fused switches	Y	Y	1	Insertion or removal (racking) of CB's from cubicles, doors closed			2	Contactor operation with enclosure doors open			2 *
Work on energized parts, including voltage testing	Y	Y	1	Opening hinged covers (to expose bare, energized parts)			2	Insertion or removal (racking) of starters from cubicles, doors open			3
Panelboards / Switchboards Rated 240 V to 600 V (with molded case or insulated case CB's) - Notes 1 & 3				Other 600 V Class (277 V to 600 V, nominal) Equipment - Lighting or small power transformers (600V Max) - Note 3				Metal Clad Switchgear, 1 kV and Above			
TASK (equipment is energized & work is done within the flash protection boundary)	V-Rated Gloves	V-Rated Tools	HRC	TASK (equipment is energized & work is done within the flash protection boundary)	V-Rated Gloves	V-Rated Tools	HRC	TASK (equipment is energized & work is done within the flash protection boundary)	V-Rated Gloves	V-Rated Tools	HRC
CB or fused switch operation with covers on			0	Opening hinged covers (to expose bare, energized parts)			1	Reading a panel meter while operating a meter switch			0
CB or fused switch operation with covers off			1	Removal of bolted covers (to expose bare, energized parts)			2 *	CB or fused switch operation with enclosure doors closed			2
Work on energized parts, including voltage testing	Y	Y	2 *	Application of safety grounds, after voltage test	Y		2 *	Work on control circuits with energized parts 120 V or below, exposed	Y	Y	2
600 V Class Motor Control Centers (MCC's) - Notes 2 (except as indicated) and 3				Other 600 V Class (277 V to 600 V Nom.) Equip - Revenue meters (kWH at primary voltage & current) - Note 3				Other Equipment 1 kV and Above - Metal clad load interrupter switches, fused or unfused			
TASK (equipment is energized & work is done within the flash protection boundary)	V-Rated Gloves	V-Rated Tools	HRC	TASK (equipment is energized & work is done within the flash protection boundary)	V-Rated Gloves	V-Rated Tools	HRC	TASK (equipment is energized & work is done within the flash protection boundary)	V-Rated Gloves	V-Rated Tools	HRC
CB or fused switch or starter operation with enclosure doors closed			0	Cable trough or tray cover removal or installation			1	Switch operation, doors closed			2
Reading a panel meter while operating a meter switch			0	Miscellaneous equipment cover removal or installation			1	Outdoor disconnect switch operation (gang-operated, from grade)			2
Work on control circuits with energized parts 120 V or below, exposed	Y	Y	0	Application of safety grounds, after voltage test	Y		2 *	Insulated cable exam, in open area	Y		2
CB or fused switch or starter operation with enclosure doors open			1	Insertion or removal	Y		2 *	Opening hinged covers (to expose bare, energized parts)			3
Opening hinged covers (to expose bare, energized parts)			1	Work on energized parts, including voltage testing	Y	Y	2 *	Outdoor disconnect switch operation (hookstick operated)	Y	Y	3
Removal of bolted covers (to expose bare, energized parts)			2 *	Minimum Clothing Requirements				Removal of bolted covers (to expose bare, energized parts)			3
Application of safety grounds, after voltage test	Y		2 *	HRC	Protective Clothing		Minimum Cal/cm²	PPE (Safety glasses, leather safety shoes required for all)			
Work on energized parts, including voltage testing	Y	Y	2 *	-1	Natural fiber short-sleeved shirt and long pants		N/A	Hard Hat			
Work on control circuits with energized parts >120 V exposed	Y	Y	2 *	0	Natural fiber long-sleeved shirt and pants		N/A	Hard hat			
Insertion or removal of individual starter "buckets" from MCC - Note 4	Y		3	1	Denim jeans and FR long-sleeved shirt OR FR long-sleeved shirt and pants OR FR coveralls		4	Hard Hat, Arc-Rated Face Shield*			
Note 7 ASTM Recommendations are noted with the *				2 *	FR long-sleeved shirt and pants OR FR coveralls		8	Hard Hat, Arc-Rated Face Shield			
* If the notes cannot be satisfied, work must be performed de-energized.				3	FR long-sleeved shirt and pants OR FR coveralls		8	Hard Hat, Hearing Protection, Arc-Rated Face Shield and 8 cal/cm ² + Stocking Hood* OR Multi-Layer Switching Hood			
Note 1 Maximum of 25 kA short circuit current available, 0.03 second (2 cycle) fault clearing time.				3	Multi-Layer flash suit over FR long-sleeved shirt and pants over natural fiber short-sleeved T-shirt and pants OR Multi-Layer flash suit over FR coveralls over natural fiber short-sleeved T-shirt and pants		25	Hard Hat, Multi-Layer Switching Hood, Hearing Protection, OR Arc-rated Goggle and Stocking Hood*			
Note 2 Maximum of 65 kA short circuit current available, 0.03 second (2 cycle) fault clearing time.				3	Multi-Layer flash suit over FR long-sleeved shirt and pants over natural fiber short-sleeved T-shirt and pants OR Multi-Layer flash suit over FR coveralls over natural fiber short-sleeved T-shirt and pants		40	Hard Hat, Multi-Layer Switching Hood, Hearing Protection, OR Arc-rated Goggle and Stocking Hood*			
Note 3 For < 10 kA short circuit current available, the HRC required may be reduced by one category.				3	Multi-Layer flash suit over FR long-sleeved shirt and pants over natural fiber short-sleeved T-shirt and pants OR Multi-Layer flash suit over FR coveralls over natural fiber short-sleeved T-shirt and pants		40	Hard Hat, Multi-Layer Switching Hood, Hearing Protection, OR Arc-rated Goggle and Stocking Hood*			
Note 4 Maximum of 42 kA short circuit current available, 0.33 second (20 cycle) fault clearing time.				3	Multi-Layer flash suit over FR long-sleeved shirt and pants over natural fiber short-sleeved T-shirt and pants OR Multi-Layer flash suit over FR coveralls over natural fiber short-sleeved T-shirt and pants		40	Hard Hat, Multi-Layer Switching Hood, Hearing Protection, OR Arc-rated Goggle and Stocking Hood*			
Note 5 Maximum of 35 kA short circuit current available, ≤ 0.5 second (30 cycle) fault clearing time.				3	Multi-Layer flash suit over FR long-sleeved shirt and pants over natural fiber short-sleeved T-shirt and pants OR Multi-Layer flash suit over FR coveralls over natural fiber short-sleeved T-shirt and pants		40	Hard Hat, Multi-Layer Switching Hood, Hearing Protection, OR Arc-rated Goggle and Stocking Hood*			
Note 6 For < 25 kA short circuit current available, the HRC required may be reduced by one category.				3	Multi-Layer flash suit over FR long-sleeved shirt and pants over natural fiber short-sleeved T-shirt and pants OR Multi-Layer flash suit over FR coveralls over natural fiber short-sleeved T-shirt and pants		40	Hard Hat, Multi-Layer Switching Hood, Hearing Protection, OR Arc-rated Goggle and Stocking Hood*			
Circuits over 40cal/cm² should only be worked de-energized.				3	Multi-Layer flash suit over FR long-sleeved shirt and pants over natural fiber short-sleeved T-shirt and pants OR Multi-Layer flash suit over FR coveralls over natural fiber short-sleeved T-shirt and pants		40	Hard Hat, Multi-Layer Switching Hood, Hearing Protection, OR Arc-rated Goggle and Stocking Hood			
Definitions: Y=Yes (Required)				3	Multi-Layer flash suit over FR long-sleeved shirt and pants over natural fiber short-sleeved T-shirt and pants OR Multi-Layer flash suit over FR coveralls over natural fiber short-sleeved T-shirt and pants		40	Hard Hat, Multi-Layer Switching Hood, Hearing Protection, OR Arc-rated Goggle and Stocking Hood*			
V-Rated Gloves : gloves rated and tested for the maximum line-to-line voltage upon which work will be done. Leather protectors must be worn externally if v-rated rubber gloves could be damaged.				3	Multi-Layer flash suit over FR long-sleeved shirt and pants over natural fiber short-sleeved T-shirt and pants OR Multi-Layer flash suit over FR coveralls over natural fiber short-sleeved T-shirt and pants		40	Hard Hat, Multi-Layer Switching Hood, Hearing Protection, OR Arc-rated Goggle and Stocking Hood*			
V-Rated Tools : tools rated and tested for the maximum line-to-line voltage upon which work will be done.				3	Multi-Layer flash suit over FR long-sleeved shirt and pants over natural fiber short-sleeved T-shirt and pants OR Multi-Layer flash suit over FR coveralls over natural fiber short-sleeved T-shirt and pants		40	Hard Hat, Multi-Layer Switching Hood, Hearing Protection, OR Arc-rated Goggle and Stocking Hood*			
HRC : Hazard Risk Category				3	Multi-Layer flash suit over FR long-sleeved shirt and pants over natural fiber short-sleeved T-shirt and pants OR Multi-Layer flash suit over FR coveralls over natural fiber short-sleeved T-shirt and pants		40	Hard Hat, Multi-Layer Switching Hood, Hearing Protection, OR Arc-rated Goggle and Stocking Hood*			
FR : Flame Resistant				3	Multi-Layer flash suit over FR long-sleeved shirt and pants over natural fiber short-sleeved T-shirt and pants OR Multi-Layer flash suit over FR coveralls over natural fiber short-sleeved T-shirt and pants		40	Hard Hat, Multi-Layer Switching Hood, Hearing Protection, OR Arc-rated Goggle and Stocking Hood*			



Khaki Shirt & Blue Work Pants



ARC SAFE

**NEW ASTM F1506 AND
NFPA 70E PPE**

**Chambray Shirts and
Jeans made
from INDURA Ultra Soft**

Shirts are available in
Chambray and Khaki colors.
Chambray Arc rating 5.2
(ATPV)
Khaki Arc rating 8.2 (ATPV)
Sizes from S to 5XL
Available in Blue

**11 Cal/cm² Long Sleeve Knit Cotton
Cool Tee Shirts**

Shirt Sizes	Blue*
S 36-38.	54045
M 40-42.	54046
L 44-46.	54047
XL 48-50.	54048
2XL 52-54.	54049
3XL 56-58.	54050
4XL 60-62.	54051
5XL 64-66.	54052
6XL 68-70.	54053

*other colors are available

Western Style Jeans are
available in Denim color.
Arc rating 20.7 (ATPV)
Sizes 28-56 inches (waist)
Standard inseam is 32"

A Khaki Shirt and Denim
Jeans protects the body to
Hazard Risk Category 2, add
a double layer arc hood and
voltage rated gloves and this
would bring you into
compliance with Hazard Risk
Category 2*.

Shirt Sizes	Khaki #	Chambray#
S 36-38.	53980	53996
M 40-42.	53982	53998
L 44-46.	53984	54000
XL 48-50.	53986	54002
2XL 52-54.	53988	54004
3XL 56-58.	53990	54006
4XL 60-62.	53992	54008
5XL 64-66.	53994	54010

Pant Sizes	Jeans #	Blue Work #
XS 28-30.	53960	53930
S 32-34.	53962	53934
M 36-38.	53964	53938
L 40-42.	53966	53942
XL 44-46.	53968	53946
2XL 48-50.	53970	53950
3XL 52-54.	53972	53954
4XL 56-58.	53974	53958

Pants: Standard inseam = 32"
Longer add 15%
Shorter no additional charge
FR Blue Work Pants = 11 (ATPV)
Made in the U.S.A.

Hazard Risk Category 1 & 2 - Arc Protection PPE - Face / Head / Eye

HRC 0	HRC 1	HRC 2	HRC 2*	HRC 3	HRC 4
--------------	--------------	--------------	---------------	--------------	--------------

See page 1 for 70 E Compliance Guide



Code#	Code#	Code#	Code#	Code#	Code#	Code#
52510	52509	52546	52547	52548	50311	52513
Code#	Description	Cal/cm ²	Code#	Description	Cal/cm ²	
52510	Arc Shield with hard hat	10	52546	Knit Detachable Hood	11	
52511	Arc Shield ONLY	10	52547	Stocking Hood-worn under hard hat and arc shield (Highly recommended for use with 52510)	17	
52512	Arc Shield / Helmet / Hood / Storage Bag	11	52548	Arc Hood	11	
52508	Arc Shield / Hard Hat / Storage Bag	10	50311	Thermographer Gloves	11	
52500	Arc Shield / Hard Hat / Storage Bag / Back Pack	10	50313	Thermographer Gloves	45	
52501	Arc Shield / Hard Hat / Tool Back Pack	—	50315	Thermographer Gloves	59	
52502	Replacement Lenses	10	52513	Flash Protection Hot Back Pack	—	
52503	Hard Hat Adapter	10	52514	Large Flash Protection Hot Back Pack	—	
52504	Replacement Chin Cup	—	52540	Safety Helmet - Class E	—	
52509	Arc Shield / Hood Storage Bag	—	52542	Safety Glasses	—	
52549	Knit Balaclava Hood	11				

Flash Protection Clothing (FR)

Ultra Soft INDURA® Knit fabric weight 6.3 oz., ATPV 11 cal/cm²

NOMEX® fabric weight 6.0 oz., ATPV 5.6 cal/cm²

	Navy Blue Parka		Navy Blue Lab Coat		Navy Blue Coveralls		Navy Blue Overalls	
	Indura®	NOMEX®	Indura®	NOMEX®	Indura®	NOMEX®	Indura®	NOMEX®
Small	21780	52620	21790	52635	21770	52590	52560	52660
Medium	21781	52622	21791	52636	21771	52592	52562	52662
Large	21782	52624	21792	52637	21772	52594	52564	52664
X-Large	21783	52626	21793	52638	21773	52595	52566	52666
XX-Large	21784	52628	21794	52639	21774	52596	52568	52668
XXX-Large	21785	52630	21795	52640	21775	52597	52570	52670
XXXX-Large	21786	52632	21796	52641	21776	52598	52572	52672

* Specify parka / coat / jacket and glove sizes when ordering kits

Arc Protection Kits

	Anti-Fog Arc Shield	52511 (10 cal/cm ²)	52511 (10 cal/cm ²)	52511 (10 cal/cm ²)	52511 (10 cal/cm ²)	52511 (10 cal/cm ²)
	Safety Glasses	52542	52542	52542	52542	52542
	Flame Resistant Parka	11 cal/cm ² Ultra Soft INDURA®	11 cal/cm ² Ultra Soft INDURA®	11 cal/cm ² Ultra Soft INDURA®	5.6 cal/cm ² NOMEX®	5.6 cal/cm ² NOMEX®
	Insulating Gloves	500V Class 00	1,000V Class 0	20,000V Class 2	1,000V Class 0	20,000V Class 2
	Appropriate Glove Protectors	Class 00	Class 0	Class 2	Class 0	Class 2
	Glove Bag	22100	22100	22200	22100	22200
	Safety Helmet	52540	52540	52540	52540	52540
Flash Apparel Bag	52599	52599	52599	52599	52599	
Complete Kit Code #	52790	52800	52801	52802	52803	
Kit Without Gloves Code #	52804	52804	52804	52805	52805	
	Anti-Fog Arc Shield	52511 (10 cal/cm ²)	52511 (10 cal/cm ²)	52511 (10 cal/cm ²)	52511 (10 cal/cm ²)	52511 (10 cal/cm ²)
	Safety Glasses	52542	52542	52542	52542	52542
	Flame Resistant Lab Coat	11 cal/cm ² Ultra Soft INDURA®	11 cal/cm ² Ultra Soft INDURA®	11 cal/cm ² Ultra Soft INDURA®	5.6 cal/cm ² NOMEX®	5.6 cal/cm ² NOMEX®
	Insulating Gloves	500V Class 00	1,000V Class 0	20,000V Class 2	1,000V Class 0	20,000V Class 2
	Appropriate Glove Protectors	Class 00	Class 0	Class 2	Class 0	Class 2
	Glove Bag	22100	22100	22200	22100	22200
	Safety Helmet	52540	52540	52540	52540	52540
Flash Apparel Bag	52599	52599	52599	52599	52599	
Flame Retardant Hood	52546	52546	52546	52545	52545	
Complete Kit Code #	52791	52806	52807	52820	52822	
Kit Without Gloves Code #	52808	52808	52808	52824	52824	
	Anti-Fog Arc Shield	52511 (10 cal/cm ²)	52511 (10 cal/cm ²)	52511 (10 cal/cm ²)	52511 (10 cal/cm ²)	52511 (10 cal/cm ²)
	Safety Glasses	52542	52542	52542	52542	52542
	Flame Resistant Coverall	11 cal/cm ² Ultra Soft INDURA®	11 cal/cm ² Ultra Soft INDURA®	11 cal/cm ² Ultra Soft INDURA®	5.6 cal/cm ² NOMEX®	5.6 cal/cm ² NOMEX®
	Insulating Gloves	500V Class 00	1,000V Class 0	20,000V Class 2	1,000V Class 0	20,000V Class 2
	Appropriate Glove Protectors	Class 00	Class 0	Class 2	Class 0	Class 2
	Glove Bag	22100	22100	22200	22100	22200
	Safety Helmet	52540	52540	52540	52540	52540
Flash Apparel Bag	52599	52599	52599	52599	52599	
Flame Retardant Hood	52546	52546	52546	52545	52545	
Complete Kit Code #	52792	52830	52832	52836	52838	
Kit Without Gloves Code #	52834	52834	52834	52840	52840	

SIZE CHARTS

Jackets, Coats & Coveralls (Chest Sizes)

Coveralls: Standard Inseam = 32"

Small (36-38)	Medium (40-42)	Large (44-46)	XLarge (48-50)	2XL (52-54)	3XL (56-58)	4XL (60-62)	5XL (64-66)
---------------	----------------	---------------	----------------	-------------	-------------	-------------	-------------

Pants (Waist Sizes)

Pant: Standard Inseam = 32"

Xsmall (28-30)	Small (32-34)	Medium (36-38)	Large (40-42)	XL (44-46)	2XL (48-50)	3XL (52-54)	4XL (56-58)
----------------	---------------	----------------	---------------	------------	-------------	-------------	-------------



In order to determine the proper size for Class 0 and 00 insulating gloves, use a tape measure to find the circumference of your hand around the palm.

For example, 8" means your Class 0 and 00 glove size is 8. For Class 2 gloves add 1/2" size to allow for dexterity. For example, 8" means your Class 2 glove size is 8 1/2."



ARC Shield & PPE Clothing



Glove Storage



Electrical Test Gear



Slide Out Tool Pack

Electrician's Backpack - The Hot Pack®

All in one solution for flash rated PPE clothing, V-rated tools and insulating gloves. CIP's new backpack has a top pouch designed to store gloves and two side pouches designed for electrical test gear and one back pouch with slide out sleeve for holding tools. All pouches include quick close velcro flaps. The large center pouch is designed to accommodate and protect the arc face shield and to store flash rated clothing. The waterproof backpack is available in kits with all PPE to bring you in compliance with the new 2004 NFPA 70E Safety Standards. Available in electrical safety orange and navy blue. (Custom logos available) (Patent # D 505,258)

ARC Shield	Safety Helmet	Storage Bag	Tool Back Pack	Tool Kit 13302	Gloves & Protectors	F/R Clothing	Style Clothing	Code #
✓	✓	✓	✓	✓	Class 00	X	X	53800
✓	✓	✓	✓	✓	Class 0	X	X	53801
✓	✓	✓	✓	✓	Class 2	X	X	53802
✓	✓	X	✓	✓	X	X	X	53803
✓	✓	X	✓	✓	Class 00	X	X	53804
✓	✓	X	✓	✓	Class 0	X	X	53805
✓	✓	X	✓	✓	Class 2	X	X	53806
✓	✓	X	✓	✓	X	X	X	53807
✓	✓	✓	✓	✓	Class 00	11 Cal/CM²	Parka	53808
✓	✓	✓	✓	✓	Class 0	11 Cal/CM²	Parka	53809
✓	✓	✓	✓	✓	Class 2	11 Cal/CM²	Parka	53810
✓	✓	X	✓	✓	X	11 Cal/CM²	Parka	53811
✓	✓	X	✓	✓	Class 00	11 Cal/CM²	Parka	53812
✓	✓	X	✓	✓	Class 0	11 Cal/CM²	Parka	53813
✓	✓	X	✓	✓	Class 2	11 Cal/CM²	Parka	53814
✓	✓	X	✓	✓	X	11 Cal/CM²	Parka	53815
✓	✓	✓	✓	✓	Class 00	5.6 Cal/CM²	Parka	53816
✓	✓	✓	✓	✓	Class 0	5.6 Cal/CM²	Parka	53817
✓	✓	✓	✓	✓	Class 2	5.6 Cal/CM²	Parka	53818
✓	✓	✓	✓	✓	X	5.6 Cal/CM²	Parka	53819
✓	✓	X	✓	✓	Class 00	5.6 Cal/CM²	Parka	53820
✓	✓	X	✓	✓	Class 0	5.6 Cal/CM²	Parka	53821
✓	✓	X	✓	✓	Class 2	5.6 Cal/CM²	Parka	53822
✓	✓	X	✓	✓	X	5.6 Cal/CM²	Parka	53823
✓	✓	✓	✓	✓	Class 00	11 Cal/CM²	Coverall/Hood	53824
✓	✓	✓	✓	✓	Class 0	11 Cal/CM²	Coverall/Hood	53825
✓	✓	✓	✓	✓	Class 2	11 Cal/CM²	Coverall/Hood	53826
✓	✓	✓	✓	✓	X	11 Cal/CM²	Coverall/Hood	53827
✓	✓	X	✓	✓	Class 00	11 Cal/CM²	Coverall/Hood	53828
✓	✓	X	✓	✓	Class 0	11 Cal/CM²	Coverall/Hood	53829
✓	✓	X	✓	✓	Class 2	11 Cal/CM²	Coverall/Hood	53830
✓	✓	X	✓	✓	X	11 Cal/CM²	Coverall/Hood	53831
✓	✓	✓	✓	✓	Class 00	5.6 Cal/CM²	Coverall/Hood	53832
✓	✓	✓	✓	✓	Class 0	5.6 Cal/CM²	Coverall/Hood	53833
✓	✓	✓	✓	✓	Class 2	5.6 Cal/CM²	Coverall/Hood	53834
✓	✓	✓	✓	✓	X	5.6 Cal/CM²	Coverall/Hood	53835
✓	✓	X	✓	✓	Class 00	5.6 Cal/CM²	Coverall/Hood	53836
✓	✓	X	✓	✓	Class 0	5.6 Cal/CM²	Coverall/Hood	53837

Hazard Risk Category 1 & 2 - Arc Protection PPE - Hot Pack Kits

HRC 0

HRC 1

HRC 2

HRC 2*

HRC 3

HRC 4

See page 1 for 70 E Compliance Guide

ARC Shield	Safety Helmet	Storage Bag	Tool Back Pack	Tool Kit 13302	Gloves & Protectors	F/R Clothing	Style Clothing	Code #
✓	✓	X	✓	✓	Class 2	5.6 Cal/CM ²	Coverall/Hood	53838
✓	✓	X	✓	✓	X	5.6 Cal/CM ²	Coverall/Hood	53839
✓	✓	✓	✓	✓	Class 00	11 Cal/CM ²	Lab Coat/Hood	53840
✓	✓	✓	✓	✓	Class 0	11 Cal/CM ²	Lab Coat/Hood	53841
✓	✓	✓	✓	✓	Class 2	11 Cal/CM ²	Lab Coat/Hood	53842
✓	✓	✓	✓	✓	X	11 Cal/CM ²	Lab Coat/Hood	53843
✓	✓	X	✓	✓	Class 00	11 Cal/CM ²	Lab Coat/Hood	53844
✓	✓	X	✓	✓	Class 0	11 Cal/CM ²	Lab Coat/Hood	53845
✓	✓	X	✓	✓	Class 2	11 Cal/CM ²	Lab Coat/Hood	53846
✓	✓	X	✓	✓	X	11 Cal/CM ²	Lab Coat/Hood	53847
✓	✓	✓	✓	✓	Class 00	5.6 Cal/CM ²	Lab Coat/Hood	53848
✓	✓	✓	✓	✓	Class 0	5.6 Cal/CM ²	Lab Coat/Hood	53849
✓	✓	✓	✓	✓	Class 2	5.6 Cal/CM ²	Lab Coat/Hood	53850
✓	✓	✓	✓	✓	X	5.6 Cal/CM ²	Lab Coat/Hood	53851
✓	✓	X	✓	✓	Class 00	5.6 Cal/CM ²	Lab Coat/Hood	53852
✓	✓	X	✓	✓	Class 0	5.6 Cal/CM ²	Lab Coat/Hood	53853
✓	✓	X	✓	✓	Class 2	5.6 Cal/CM ²	Lab Coat/Hood	53854
✓	✓	X	✓	✓	X	5.6 Cal/CM ²	Lab Coat/Hood	53855
✓	✓	✓	✓	X	Class 00	X	X	53856
✓	✓	✓	✓	X	Class 0	X	X	53857
✓	✓	✓	✓	X	Class 2	X	X	53858
✓	✓	✓	✓	X	X	X	X	53859
✓	✓	X	✓	X	Class 00	X	X	53860
✓	✓	X	✓	X	Class 0	X	X	53861
✓	✓	X	✓	X	Class 2	X	X	53862
✓	✓	X	✓	X	X	X	X	53863
✓	✓	✓	✓	X	Class 00	11 Cal/CM ²	Parka	53864
✓	✓	✓	✓	X	Class 0	11 Cal/CM ²	Parka	53865
✓	✓	✓	✓	X	Class 2	11 Cal/CM ²	Parka	53866
✓	✓	✓	✓	X	X	11 Cal/CM ²	Parka	53867
✓	✓	X	✓	X	Class 00	11 Cal/CM ²	Parka	53868
✓	✓	X	✓	X	Class 0	11 Cal/CM ²	Parka	53869
✓	✓	X	✓	X	Class 2	11 Cal/CM ²	Parka	53870
✓	✓	✓	✓	X	X	11 Cal/CM ²	Parka	53871
✓	✓	✓	✓	X	Class 00	5.6 Cal/CM ²	Parka	53872
✓	✓	✓	✓	X	Class 0	5.6 Cal/CM ²	Parka	53873
✓	✓	✓	✓	X	Class 2	5.6 Cal/CM ²	Parka	53874
✓	✓	✓	✓	X	X	5.6 Cal/CM ²	Parka	53875
✓	✓	X	✓	X	Class 00	5.6 Cal/CM ²	Parka	53876
✓	✓	X	✓	X	Class 0	5.6 Cal/CM ²	Parka	53877
✓	✓	X	✓	X	Class 2	5.6 Cal/CM ²	Parka	53878
✓	✓	X	✓	X	X	5.6 Cal/CM ²	Parka	53879
✓	✓	✓	✓	X	Class 00	11 Cal/CM ²	Coverall/Hood	53880
✓	✓	✓	✓	X	Class 0	11 Cal/CM ²	Coverall/Hood	53881
✓	✓	✓	✓	X	Class 2	11 Cal/CM ²	Coverall/Hood	53882
✓	✓	✓	✓	X	X	11 Cal/CM ²	Coverall/Hood	53883
✓	✓	X	✓	X	Class 00	11 Cal/CM ²	Coverall/Hood	53884
✓	✓	X	✓	X	Class 0	11 Cal/CM ²	Coverall/Hood	53885
✓	✓	X	✓	X	Class 2	11 Cal/CM ²	Coverall/Hood	53886
✓	✓	X	✓	X	X	11 Cal/CM ²	Coverall/Hood	53887
✓	✓	✓	✓	X	Class 00	5.6 Cal/CM ²	Coverall/Hood	53888
✓	✓	✓	✓	X	Class 0	5.6 Cal/CM ²	Coverall/Hood	53889
✓	✓	✓	✓	X	Class 2	5.6 Cal/CM ²	Coverall/Hood	53890
✓	✓	✓	✓	X	X	5.6 Cal/CM ²	Coverall/Hood	53900
✓	✓	X	✓	X	Class 00	5.6 Cal/CM ²	Coverall/Hood	53901
✓	✓	X	✓	X	Class 0	5.6 Cal/CM ²	Coverall/Hood	53902
✓	✓	X	✓	X	Class 2	5.6 Cal/CM ²	Coverall/Hood	53903
✓	✓	X	✓	X	X	5.6 Cal/CM ²	Coverall/Hood	53904
✓	✓	✓	✓	X	Class 00	11 Cal/CM ²	Lab Coat/Hood	53905
✓	✓	✓	✓	X	Class 0	11 Cal/CM ²	Lab Coat/Hood	53906
✓	✓	✓	✓	X	Class 2	11 Cal/CM ²	Lab Coat/Hood	53907
✓	✓	✓	✓	X	X	11 Cal/CM ²	Lab Coat/Hood	53908
✓	✓	X	✓	X	Class 00	11 Cal/CM ²	Lab Coat/Hood	53909
✓	✓	X	✓	X	Class 0	11 Cal/CM ²	Lab Coat/Hood	53910
✓	✓	X	✓	X	Class 2	11 Cal/CM ²	Lab Coat/Hood	53911
✓	✓	X	✓	X	X	11 Cal/CM ²	Lab Coat/Hood	53912
✓	✓	✓	✓	X	Class 00	5.6 Cal/CM ²	Lab Coat/Hood	53913
✓	✓	✓	✓	X	Class 0	5.6 Cal/CM ²	Lab Coat/Hood	53914
✓	✓	✓	✓	X	Class 2	5.6 Cal/CM ²	Lab Coat/Hood	53915
✓	✓	✓	✓	X	X	5.6 Cal/CM ²	Lab Coat/Hood	53916
✓	✓	X	✓	X	Class 00	5.6 Cal/CM ²	Lab Coat/Hood	53917
✓	✓	X	✓	X	Class 0	5.6 Cal/CM ²	Lab Coat/Hood	53918
✓	✓	X	✓	X	Class 2	5.6 Cal/CM ²	Lab Coat/Hood	53919
✓	✓	X	✓	X	X	5.6 Cal/CM ²	Lab Coat/Hood	53920

ARC PROTECTION CLOTHING (FR) AND KITS

Electrical Arc Hood



- The Flash Arc Hood incorporates UV- and IR-absorbing window providing protection up to 100 cal/cm². Past generations of gold reflective faceshields only provided up to 7.33 cal/cm² of protection, and the typical clear faceshield only 1.2 cal/cm².
- The green tint window is coated with a permanent anti-fog inner surface. Code #52509 Storage Bag Available for Hood
- Arc Hoods are supplied with Hard Hat Adapter and Safety Helmet.

Code#	Description	cal/cm ²
52515	High Visibility Arc Hood	21
52516	High Visibility Arc Hood W/O Hard Hat	21
52517	Replacement Window	21
52543	Balaclava Hood	47
52544	Arc Goggle	38
52685	Flash Protection High Visibility Arc Hood - Double Layered	33
52686	Replacement Window	33/45
52850	Flash Protection High Visibility Arc Hood	45
52687	Flash Protection Arc Hood	62
52688	Replacement Window	62
52880	Flash Protection Arc Hood	76
52689	Flash Protection Arc Hood	100
52699	Replacement Window	100

FR Jackets, Overalls and Coveralls

Flash jacket is approximately waist length and must be worn in combination with Flash Pants.



- Small
- Medium
- Large
- X-Large
- XX-Large
- XXX-Large
- XXXX-Large
- XXXXX-Large

Overall Pattern
Boot Legs Open



Overall Pattern

- Small
- Medium
- Large
- X-Large
- XX-Large
- XXX-Large
- XXXX-Large
- XXXXX-Large

21 cal/cm²

Single-layer 13oz. Navy Blue Ultra Soft INDURA® Thread -- NOMEX®/Kevlar

Jacket	Overall
21719	21729
21720	21730
21721	21731
21722	21732
21723	21733
21724	21734
21725	21735
21726	21736
21727	21737

21 cal/cm²

Single-layer 13oz. Navy Blue Ultra Soft INDURA® Thread -- NOMEX®/Kevlar

Coat	Coverall
52519	52770
52520	52771
52521	52772
52522	52773
52523	52774
52524	52775
52525	52776
52526	52777
52527	52778

33 cal/cm²

Multi-layer 9oz. INDURA® Ultra Soft with over 7oz. INDURA® Ultra Soft Thread -- NOMEX®/Kevlar

Jacket	Overall	Coverall
52678	53678	52756
52679	53679	52757
52680	53680	52758
52681	53681	52759
52682	53682	52760
52683	53683	52761
52684	53684	52762
52697	53685	52763
52698	53686	52764

51 cal/cm²

Multi-layer 9oz. INDURA® Ultra Soft with over 12oz. INDURA® Ultra Soft Thread -- NOMEX®/Kevlar

Jacket	Overall
52851	52858
52852	52859
52853	52860
52854	52861
52855	52862
52856	52863
52857	52864

62 cal/cm²

Multi-layer 12oz. INDURA® Ultra Soft over 12oz. INDURA® Ultra Soft

Jacket	Overall
52690	53690
52691	53691
52692	53692
52693	53693
52694	53694
52695	53695
52696	53696

83 cal/cm²

12oz. INDURA® Ultra Soft over 7 oz. and 12oz. INDURA® Ultra Soft

Jacket	Overall
52881	52888
52882	52889
52883	52900
52884	52901
52885	52902
52886	52903
52887	52904

100 cal/cm²

1 ply 10oz. Twaron® microfibr 1 ply Carbon X® Felt 1 ply 11oz. Carbon X® Twill

Jacket	Overall
52749	53749
52750	53750
52751	53751
52752	53752
52753	53753
52754	53754
52755	53755



Jacket Pattern

Controlled Environment Flame Resistant Coveralls 6.0 cal/cm²



Size	Code
Extra Small	21760
Small	21761
Medium	21762
Large	21763
X-Large	21764
2X Large	21765
3X Large	21766
4X Large	21767
5X Large	21768
6X Large	21769



"White Knight Engineered Products, Inc. makes no warranties and assumes no liability other than the workmanship of our garments. Customers must determine the efficacy of these items for their particular environmental needs and perform tests to confirm suitability."



11 cal/cm² Arc Protection Parka



**Hooded Sweat Shirt
17 cal/cm² Arc Protection**



**Code #52811
21 cal/cm² Arc Protection Kit**



**21 cal/cm² Coveralls
shown without arc hood**

All kits listed below come with safety helmet (52540) and 21 cal/cm² Arc Hood (52515)

Please specify flame resistant clothing and insulating glove sizes

Safety Glasses	Style Clothing 21 cal/cm ²	Insulating Gloves	Leather Protectors	Glove Bag	Carrying Bag 52599	Hot Back Pack 52513	Toolkit 13302	Code #
✓	Coat	Class 00	Class 00	✓	✓	X	X	52809
✓	Coat	Class 0	Class 0	✓	✓	X	X	52810
✓	Coat	Class 2	Class 2	✓	✓	X	X	52811
X	Coat	X	X	X	✓	X	X	52814
✓	Coveralls	Class 00	Class 00	✓	✓	X	X	52812
✓	Coveralls	Class 0	Class 0	✓	✓	X	X	52813
✓	Coveralls	Class 2	Class 2	✓	✓	X	X	52816
X	Coveralls	X	X	X	✓	X	X	52815
✓	Coveralls	Class 00	Class 00	X	X	✓	X	52817
✓	Coveralls	Class 0	Class 0	X	X	✓	X	52818
✓	Coveralls	Class 2	Class 2	X	X	✓	X	52819
X	Coveralls	X	X	X	X	✓	X	52821
✓	Coat	Class 00	Class 00	X	X	✓	X	52925
✓	Coat	Class 0	Class 0	X	X	✓	X	52926
✓	Coat	Class 2	Class 2	X	X	✓	X	52927
X	Coat	X	X	X	X	✓	X	52928
✓	Coat	Class 00	Class 00	X	X	✓	✓	52929
✓	Coat	Class 0	Class 0	X	X	✓	✓	52930
✓	Coat	Class 2	Class 2	X	X	✓	✓	52931
X	Coat	X	X	X	X	✓	✓	52932
✓	Coveralls	Class 00	Class 00	X	X	✓	✓	52933
✓	Coveralls	Class 0	Class 0	X	X	✓	✓	52934
✓	Coveralls	Class 2	Class 2	X	X	✓	✓	52935
X	Coveralls	X	X	X	X	✓	✓	52936
✓	Jacket/Overalls	Class 00	Class 00	✓	✓	X	X	53000
✓	Jacket/Overalls	Class 0	Class 0	✓	✓	X	X	53001
✓	Jacket/Overalls	Class 2	Class 2	✓	✓	X	X	53002
X	Jacket/Overalls	X	X	X	✓	X	X	53003
✓	Jacket/Overalls	Class 00	Class 00	X	X	✓	X	53015
✓	Jacket/Overalls	Class 0	Class 0	X	X	✓	X	53016
✓	Jacket/Overalls	Class 2	Class 2	X	X	✓	X	53017
X	Jacket/Overalls	X	X	X	X	✓	X	53018
✓	Jacket/Overalls	Class 00	Class 00	X	X	✓	✓	53030
✓	Jacket/Overalls	Class 0	Class 0	X	X	✓	✓	53031
✓	Jacket/Overalls	Class 2	Class 2	X	X	✓	✓	53032
X	Jacket/Overalls	X	X	X	X	✓	✓	53033

**Hooded Sweat Shirt
17 cal/cm² Arc Protection**

Code#	Description
54032	Small (36-38)
54033	Medium (40-42)
54034	Large (44-46)
54035	X Large (48-50)
54036	2X Large (52-54)

Code#	Description
54037	3X Large (56-58)
54038	4X Large (60-62)
54039	5X Large (64-66)
54040	6X Large (68-70)





52514 Large HotPack For HRC 3 & 4 PPE



All kits listed below come with safety helmet (52540) and 33 cal/cm² Arc Hood (52685)

Please specify flame resistant clothing and insulating glove sizes

33 cal/cm² Kit #52703 Hazard Risk Category 3

New - 33 cal/cm² Coveralls

Safety Glasses	Style Clothing 33 cal/cm ²	Insulating Gloves	Leather Protectors	Glove Bag	Carrying Bag 52599	Hot Back Pack 52514	Toolkit 13302	Code #
✓	Jacket/Overalls	Class 00	Class 00	✓	✓	X	X	52700
✓	Jacket/Overalls	Class 0	Class 0	✓	✓	X	X	52701
✓	Jacket/Overalls	Class 2	Class 2	✓	✓	X	X	52703
X	Jacket/Overalls	X	X	X	✓	X	X	52702
✓	Coveralls	Class 00	Class 00	✓	✓	X	X	52787
✓	Coveralls	Class 0	Class 0	✓	✓	X	X	52788
✓	Coveralls	Class 2	Class 2	✓	✓	X	X	52789
X	Coveralls	X	X	X	✓	X	X	52765
✓	Jacket/Overalls	Class 00	Class 00	X	✓	✓	X	52766
✓	Jacket/Overalls	Class 0	Class 0	X	X	✓	X	52767
✓	Jacket/Overalls	Class 2	Class 2	X	X	✓	X	52768
X	Jacket/Overalls	X	X	X	X	✓	X	52769
✓	Coveralls	Class 00	Class 00	X	X	✓	X	52940
✓	Coveralls	Class 0	Class 0	X	X	✓	X	52941
✓	Coveralls	Class 2	Class 2	X	X	✓	X	52942
X	Coveralls	X	X	X	X	✓	X	52943
✓	Jacket/Overalls	Class 00	Class 00	X	X	✓	✓	52954
✓	Jacket/Overalls	Class 0	Class 0	X	X	✓	✓	52955
✓	Jacket/Overalls	Class 2	Class 2	X	X	✓	✓	52956
X	Jacket/Overalls	X	X	X	X	✓	✓	52957
✓	Coveralls	Class 00	Class 00	X	X	✓	✓	52970
✓	Coveralls	Class 0	Class 0	X	X	✓	✓	52971
✓	Coveralls	Class 2	Class 2	X	X	✓	✓	52972
X	Coveralls	X	X	X	X	✓	✓	52974



Description

Hot Pack Tool Kit

* CAN BE ALTERED

- 9" Linesman Pliers
- 7½" Diagonal Cutting Pliers
- 7" Needle Nose Pliers
- Combination Stripper & Crimper
- #2 x 6" Square (Robertson) Screwdriver*
- ¾" x 6" Slotted Screwdriver*
- ¼" x 6" Slotted Screwdriver*
- # 1 x 5" Phillips Screwdriver*
- # 2 x 4" Phillips Screwdriver*



Code #52850
New 45 cal/cm²
High Visibility ArcShield



Code #52866
45 cal/cm² Arc Protection Kit
Hazard Risk Category 4



Code #52706
62 cal/cm² Arc Protection Kit
Hazard Risk Category 4



Code #52543
47 cal/cm² Balaclava Hood
Code #52544
38 cal/cm² Arc Goggle

All kits listed below come with safety helmet (52540) and the appropriate cal/cm² Arc Hood. Please specify flame resistant clothing and insulating gloves sizes.

*Circuits over 40 cal/cm² should only be worked de-energized.

Safety Glasses	Style Clothing Jacket/Overall	Insulating Gloves	Leather Protectors	Glove Bag	Carrying Bag 52599	Hot Back Pack 52514	Toolkit 13302	Code #
✓	45 cal/cm ²	Class 0	Class 0	✓	✓	X	X	52865
✓	45 cal/cm ²	Class 2	Class 2	✓	✓	X	X	52866
X	45 cal/cm ²	X	X	✓	✓	X	X	52867
✓	45 cal/cm ²	Class 0	Class 0	X	X	✓	X	53050
✓	45 cal/cm ²	Class 2	Class 2	X	X	✓	X	53051
X	45 cal/cm ²	X	X	X	X	✓	X	53052
✓	45 cal/cm ²	Class 0	Class 0	X	X	✓	✓	53065
✓	45 cal/cm ²	Class 2	Class 2	X	X	✓	✓	53066
X	45 cal/cm ²	X	X	X	X	✓	✓	53067
✓	62 cal/cm ²	Class 0	Class 0	✓	✓	X	X	52705
✓	62 cal/cm ²	Class 2	Class 2	✓	✓	X	X	52706
X	62 cal/cm ²	X	X	X	✓	X	X	52707
✓	62 cal/cm ²	Class 0	Class 0	X	X	✓	X	53080
✓	62 cal/cm ²	Class 2	Class 2	X	X	✓	X	53081
X	62 cal/cm ²	X	X	X	X	✓	X	53082
✓	62 cal/cm ²	Class 0	Class 0	X	X	✓	✓	53092
✓	62 cal/cm ²	Class 2	Class 2	X	X	✓	✓	53093
X	62 cal/cm ²	X	X	X	X	✓	✓	53094
✓	83 cal/cm ²	Class 0	Class 0	✓	✓	X	X	52905
✓	83 cal/cm ²	Class 2	Class 2	✓	✓	X	X	52906
X	83 cal/cm ²	X	X	X	✓	X	X	52907
✓	100 cal/cm ²	Class 0	Class 0	✓	✓	X	X	52709
✓	100 cal/cm ²	Class 2	Class 2	✓	✓	X	X	52710
X	100 cal/cm ²	X	X	X	✓	X	X	52711

Table F-1, Simplified, Two-Category, Flame-Resistant Clothing System NFPA 70E-Compliance Guide-Page 1

F-1 Use of simplified approach. The use of table F-1 is suggested as a simplified approach to assure adequate PPE for electrical workers within facilities with large and diverse electrical systems. The clothing listed in table F-1 fulfills the minimum FR clothing requirements of Tables 3-3.9.1 and 3-3.9.2. The clothing systems listed in this table should be used with other PPE appropriate for the Hazard / Risk Category. See Table 3-3.9.2.

Applicable Tasks

Clothing

Everyday Work Clothing:

FR long-sleeve shirt (minimum ATPV of 5) worn over an untreated cotton T-shirt with FR pants (minimum ATPV of 8).

or

FR coveralls (minimum ATPV of 5) worn over an untreated cotton T-shirt (or an untreated natural fiber long-sleeve shirt) with untreated natural fiber pants.

Electrical "Switching" Clothing:

Double-layer FR flash jacket and FR bib overalls worn over either FR coveralls (minimum ATPV of 5) or FR long-sleeve shirt and FR pants (minimum ATPV of 5), worn over untreated natural fiber long-sleeve shirt and pants, worn over an untreated cotton T-shirt.

or

Insulated FR coveralls (with a minimum ATPV of 25, independent of other layers) worn over untreated natural fiber long-sleeve shirt with untreated denim cotton blue jeans ("regular weight," minimum 12oz/yd² fabric weight), worn over an untreated cotton T-shirt.

All Hazard / Risk Category 1 and 2 tasks listed in Table 3-3.9.1. On all systems operating at less than 1000 volts, these tasks include work on all equipment *except*

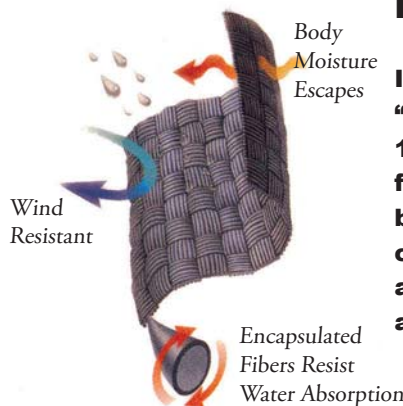
- Insertion or removal of low-voltage motor starter "buckets"
- Insertion or removal of power circuit breakers with the switchgear doors open or,
- Removal of bolted covers from switchgear

On systems operating at 1000 volts or greater, tasks also include the operation, insertion, or removal of switching devices *with equipment enclosure doors closed*.

All Hazard / Risk Category 3 and 4 tasks listed in Table 3-3.9.1.

On systems operating at 1000 volts or greater, these tasks include work on exposed energized parts of all equipment.

On systems of less than 1000 volts, tasks include insertion or removal of low-voltage motor starter MCC "buckets," insertion or removal of power circuit breakers with the switchgear enclosure doors open, and removal of bolted covers from switchgear.



Rain Gear Fabric

Indura Ultra Soft with Epic is a “soft shell”, 88 percent cotton, 12 percent high-tenacity nylon fabric designed for use in all but the most severe outdoor conditions. The fabric is breathable, washable, flame, water and wind-resistant.

A Revolutionary All-Weather “Soft Shell” Flame Resistant Fabric

What is INDURA® Ultra Soft with EPIC?

It's a new breakthrough “soft shell” 88% cotton 12% high tenacity nylon, flame resistant, water resistant, wind resistant, breathable and washable fabric for use in all but the most severe outdoor conditions, making it a more useful, functional garment than laminated or coated “hard shell” garments.

How does the EPIC technology work?

EPIC is a proprietary and patented technology by Nextec Applications, which encapsulates fabric fibers with a micro-thin polymer creating a breathable barrier inside the fabric. Tiny “micro holes” between the encapsulated fibers allow water vapor to escape without allowing outside water and wind to penetrate, in all but the most severe conditions.

Can INDURA® Ultra Soft with EPIC be washed?

Yes. The EPIC water-resistant characteristics will be sustained even after 50 home launderings. Because the base fabric is INDURA® Ultra Soft, the flame resistance is guaranteed for the life of the garment. Please contact Westex for detailed laundering instructions.

Does INDURA® Ultra Soft with EPIC meet industry standards for flame resistant clothing?

Yes. It meets the requirements of OSHA 1910.269, ASTM 1506, NFPA 70E, 2112 and 1977.

Who will benefit from INDURA® Ultra Soft with EPIC?

Any outdoor workers that require flame resistant protection and all-weather performance such as electric & gas utilities, electrical contractors, oil, petrochemical, wildland firefighters, military and many more.

Made in the USA does Count!

When it comes to Flame Resistant (FR) clothing you have many choices! Being made in the USA maybe one of the best decisions you will ever make. When it comes to Personal Protective Equipment (PPE), someones life is on the line and that person's PPE is going to protect them from possible injury. Would you want to be the one who tells an injured worker's love ones it was cheaper to buy an imported product?

Benefits to buying “Made in the USA”

- Dependable Supply (International Political Actions could interrupt foreign supply unexpectedly & indefinitely.)
- Faster Delivery
- Special Lengths and Sizes (ie Longs, Shorts 4X 5X 6X)
- Much Smaller Minimums (Offshore has large minimums & longer lead times)
- Event Verification (In the event of an Arc Incident the factory can be accessed for verification of components. This could be a very big deal in the event of litigation).
- Benefits the American Economy!

Trademark Information:
NOMEX® is a registered trademark of E.I. du Pont de Nemours and Company.
INDURA® INDURA ULTRA SOFT® are registered trademarks of Westex Inc.
CIP® HOTBOX® HOTPACK® ELECTROSAFE® are registered trademarks of Certified Insulated Products.

Code#	Description	Size
21610	10 cal/cm² FR Indura with EPIC Navy Wet Weather Parka	XS
21611	10 cal/cm² FR Indura with EPIC Navy Wet Weather Parka	S
21612	10 cal/cm² FR Indura with EPIC Navy Wet Weather Parka	M
21613	10 cal/cm² FR Indura with EPIC Navy Wet Weather Parka	L
21614	10 cal/cm² FR Indura with EPIC Navy Wet Weather Parka	XL
21615	10 cal/cm² FR Indura with EPIC Navy Wet Weather Parka	2XL
21616	10 cal/cm² FR Indura with EPIC Navy Wet Weather Parka	3XL
21617	10 cal/cm² FR Indura with EPIC Navy Wet Weather Parka	4XL
21618	10 cal/cm² FR Indura with EPIC Navy Wet Weather Parka	5XL
21619	10 cal/cm² FR Indura with EPIC Navy Wet Weather Parka	6XL
21620	10 cal/cm² FR Indura with EPIC Navy Wet Weather Overall	XS
21621	10 cal/cm² FR Indura with EPIC Navy Wet Weather Overall	S
21622	10 cal/cm² FR Indura with EPIC Navy Wet Weather Overall	M
21623	10 cal/cm² FR Indura with EPIC Navy Wet Weather Overall	L
21624	10 cal/cm² FR Indura with EPIC Navy Wet Weather Overall	XL
21625	10 cal/cm² FR Indura with EPIC Navy Wet Weather Overall	2XL
21626	10 cal/cm² FR Indura with EPIC Navy Wet Weather Overall	3XL
21627	10 cal/cm² FR Indura with EPIC Navy Wet Weather Overall	4XL
21628	10 cal/cm² FR Indura with EPIC Navy Wet Weather Overall	5XL
21629	10 cal/cm² FR Indura with EPIC Navy Wet Weather Overall	6XL
21630	10 cal/cm² FR Indura with EPIC Navy Wet Weather Pants	XS
21631	10 cal/cm² FR Indura with EPIC Navy Wet Weather Pants	S
21632	10 cal/cm² FR Indura with EPIC Navy Wet Weather Pants	M
21633	10 cal/cm² FR Indura with EPIC Navy Wet Weather Pants	L
21634	10 cal/cm² FR Indura with EPIC Navy Wet Weather Pants	XL
21635	10 cal/cm² FR Indura with EPIC Navy Wet Weather Pants	2XL
21636	10 cal/cm² FR Indura with EPIC Navy Wet Weather Pants	3XL
21637	10 cal/cm² FR Indura with EPIC Navy Wet Weather Pants	4XL
21638	10 cal/cm² FR Indura with EPIC Navy Wet Weather Pants	5XL
21639	10 cal/cm² FR Indura with EPIC Navy Wet Weather Pants	6XL

Insulating Gloves ASTM D120-2A

Insulating Gloves

Even though you are using insulated tools, you must still wear the required gloves. The gloves protect the hands and wrist.

Employees working in areas where there are potential electrical hazards shall be provided with and shall use, electrical protective equipment that is appropriate for the specific parts of the body to be protected and for the work to be performed. OSHA 1910.335



Class 00 High Dexterity Gloves



Class 0 and Class00 Glove Kit



Class 2 Glove Kit

Size	Length	Class	Description	Glove	+ Protector	+ Glove Bag	= Kit
7	11"	00	Low Voltage (500 V Max)	51296	51290	22100	52296
8	11"	00	Low Voltage (500 V Max)	51298	51291	22100	52298
8 1/2	11"	00	Low Voltage (500 V Max)	51299	51291	22100	52299
9	11"	00	Low Voltage (500 V Max)	51300	51292	22100	52300
9 1/2	11"	00	Low Voltage (500 V Max)	51301	51293	22100	52301
10	11"	00	Low Voltage (500 V Max)	51302	51293	22100	52302
10 1/2	11"	00	Low Voltage (500 V Max)	51303	51294	22100	52303
11	11"	00	Low Voltage (500 V Max)	51304	51294	22100	52304
11 1/2	11"	00	Low Voltage (500 V Max)	51305	51295	22100	52305
12	11"	00	Low Voltage (500 V Max)	51306	51295	22100	52306
7	11"	0	Low Voltage (1000 V Max)	51110	50301	22100	51100
8	11"	0	Low Voltage (1000 V Max)	51111	50302	22100	51101
8 1/2	11"	0	Low Voltage (1000 V Max)	51112	50303	22100	51102
9	11"	0	Low Voltage (1000 V Max)	51113	50303	22100	51103
9 1/2	11"	0	Low Voltage (1000 V Max)	51114	50305	22100	51104
10	11"	0	Low Voltage (1000 V Max)	51115	50305	22100	51105
10 1/2	11"	0	Low Voltage (1000 V Max)	51116	50307	22100	51106
11	11"	0	Low Voltage (1000 V Max)	51117	50307	22100	51107
11 1/2	11"	0	Low Voltage (1000 V Max)	51118	50309	22100	51108
12	11"	0	Low Voltage (1000 V Max)	51119	50309	22100	51109
8	14"	2	High Voltage (17 KV Max)	20160	20001	22200	20171
8 1/2	14"	2	High Voltage (17 KV Max)	20161	20003	22200	20172
9	14"	2	High Voltage (17 KV Max)	20163	20003	22200	20173
9 1/2	14"	2	High Voltage (17 KV Max)	20164	20005	22200	20174
10	14"	2	High Voltage (17 KV Max)	20165	20005	22200	20175
10 1/2	14"	2	High Voltage (17 KV Max)	20166	20007	22200	20176
11	14"	2	High Voltage (17 KV Max)	20167	20007	22200	20177
11 1/2	14"	2	High Voltage (17 KV Max)	20168	20009	22200	20178
12	14"	2	High Voltage (17 KV Max)	20169	20009	22200	20179

Size	Length	Class	Description	Glove	+ Protector	+ Glove Bag	= Kit
7	14"	00	Low Voltage (500 V Max)	51307	51318	22200	51325
8	14"	00	Low Voltage (500 V Max)	51308	51319	22200	51326
8 1/2	14"	00	Low Voltage (500 V Max)	51309	51320	22200	51327
9	14"	00	Low Voltage (500 V Max)	51310	51320	22200	51328
9 1/2	14"	00	Low Voltage (500 V Max)	51311	51321	22200	51329
10	14"	00	Low Voltage (500 V Max)	51312	51321	22200	51330
10 1/2	14"	00	Low Voltage (500 V Max)	51313	51322	22200	51331
11	14"	00	Low Voltage (500 V Max)	51314	51322	22200	51332
11 1/2	14"	00	Low Voltage (500 V Max)	51315	51323	22200	51333
12	14"	00	Low Voltage (500 V Max)	51316	51323	22200	51334
7	14"	0	Low Voltage (1000 V Max)	51120	51130	22200	51137
8	14"	0	Low Voltage (1000 V Max)	51121	51131	22200	51138
8 1/2	14"	0	Low Voltage (1000 V Max)	51122	51132	22200	51139
9	14"	0	Low Voltage (1000 V Max)	51123	51132	22200	51140
9 1/2	14"	0	Low Voltage (1000 V Max)	51124	51133	22200	51141
10	14"	0	Low Voltage (1000 V Max)	51125	51133	22200	51142
10 1/2	14"	0	Low Voltage (1000 V Max)	51126	51134	22200	51143
11	14"	0	Low Voltage (1000 V Max)	51127	51134	22200	51144
11 1/2	14"	0	Low Voltage (1000 V Max)	51128	51135	22200	51145
12	14"	0	Low Voltage (1000 V Max)	51129	51135	22200	51146
8	14"	1	High Voltage (7.5 KV Max)	20140	20001	22200	20150
8 1/2	14"	1	High Voltage (7.5 KV Max)	20141	20001	22200	20151
9	14"	1	High Voltage (7.5 KV Max)	20142	20003	22200	20152
9 1/2	14"	1	High Voltage (7.5 KV Max)	20143	20003	22200	20153
10	14"	1	High Voltage (7.5 KV Max)	20144	20005	22200	20154
10 1/2	14"	1	High Voltage (7.5 KV Max)	20145	20005	22200	20155
11	14"	1	High Voltage (7.5 KV Max)	20146	20007	22200	20156
11 1/2	14"	1	High Voltage (7.5 KV Max)	20147	20007	22200	20157
12	14"	1	High Voltage (7.5 KV Max)	20148	20009	22200	20158

International IEC60903 Standard High Dexterity Gloves

Size	Length	Class	Description	Glove	+ Protector	+ Glove Bag	= Kit
8/8 1/2	11"	00	Low Voltage (500 V Max)	51340	51291	22100	51350
9/9 1/2	11"	00	Low Voltage (500 V Max)	51342	51292	22100	51352
10/10 1/2	11"	00	Low Voltage (500 V Max)	51344	51293	22100	51354
11/11 1/2	11"	00	Low Voltage (500 V Max)	51346	51294	22100	51356

Code No.	Description
20334	72-ct saturated wipe dispenser (6/cs)
20335	1-quart bottle with sprayer (12/cs)
20336	1-gallon bottle (4/cs)
20337	5-gallon pail (1 ea)



In order to determine the proper size for Class 0 and 00 insulating gloves, use a tape measure to find the circumference of your hand around the palm.

For example, 8" means your Class 0 and 00 glove size is 8. For Class 2 gloves add 1/2" size to allow for dexterity. For example, 8" means your Class 2 glove size is 8 1/2."



7.5 KV PVC Insulating Roll



- Meets ASTM F1742-03 Standard
- Transparent, tested @ 10 KV
- Cut amount needed, discard when finished

Code#	Description	Size
20307	7.5 KV Insulating Roll	4' x 50'
20309	7.5 KV Insulating Roll	4' x 25'
20312	Wood Container for Roll	
20302	4' x 50' Kit (Roll and Container)	
20317	4' x 25' Kit (Roll and Container)	

Electrical Insulating Protective Shielding

- Type 2 Insulating — Flame, Oil, and Ozone Resistant
 - ASTM Standard F2320-03
- Electrical insulating rubber shielding is engineered to protect personnel, equipment, and work areas from electrical hazards up to 7,500 volts. The shielding is flame, oil, ozone, and puncture resistant, remains flexible to -60° F, and will not melt. CIP's insulating shielding is available in convenient "safety yellow" rolls, and is 100% tested to meet ASTM standards.



Code#	Size	Max Use Voltage
20332	36" x 25'	1,000
20333	36" x 25'	7,500

Type I Insulating Blankets & Accessories

- Meets ASTM D1048-05 Standard



Code#	Description
20304	36" x 36" Class "O" Type I (1,000V Max.) Blanket
20305	36" x 36" Class "2" Type I (20,000V Max.) Blanket
20310	Blanket Canister
20300	36" x 36" Class "2" Blanket Kit (Blanket, Clamps & Canister)
20301	36" x 36" Class "O" Blanket Kit (Blanket, Clamps & Canister)
20320	Blanket Clamps (set of 2)

Sleeves



Code#	Class	Max Volts	Size
21080	0	1,000	Reg
21082	0	1,000	Large
21084	0	1,000	X-Large
21090	2	20,000	Reg
21092	2	20,000	Large
21094	2	20,000	X-Large

• ASTM Standard D1051-02

Code#	Description
21096	Sleeve Fasteners, 6/bag
21097	Sleeve Straps Regular, w/ buttons
21098	Sleeve Straps Extra Large w/ buttons
22300	Replacement Sleeve Bag

Glove Inflator



Code#
51200

Proper safety calls for frequent on-the-job inspection of equipment for mechanical damage. Inflators offer a quick, easy way to do a complete and thorough visual inspection of rubber gloves.

Rubber Goods Cleaner



Code#
See page 11

Physical Properties

- Rubber Property-Effect of Liquids (ASTM D471) Passes all tests
- Specification for In-Service Care of Insulated Gloves and Sleeves (ASTM F496) Passes all tests
- Flashpoint (ASTM D 93) No flash via TCC
- Initial Boiling Point ~212°F/100°C
- pH Neutral
- Cleaning Strength Excellent

Advantages

- No mixing required
- Excellent cleaning power
- Harmless to all elastomers (rubbers)
- Multiple package options
- Environmentally friendly
- Non-toxic and non-corrosive
- Not an RCRA-regulated hazardous waste
- Not listed as a toxic chemical by SARA 313
- Does not require reporting

Glove Liners, Pair

Knit Cotton



Code#	Size
51210	10"
51212	14"

Hot Sticks

Code#	Description	Length
40090	External Rod Clampstick	6' - 8"
42150	Universal Switching Stick	1 1/4" x 8'
49935	Fiberglass Hot Switch Stick	1 1/4" x 8"



Code#	Description	Length
40091	Telescopic	8'
40092	Telescopic	12'
40093	Telescopic	16'
40094	Telescopic	20'
40095	Telescopic	25'
40096	Telescopic	30'
40097	Telescopic	35'
40098	Telescopic	40'

Arc Rated Harness

Code#	Description
CIP-68300	Medium Arc Rated Harness
CIP-68302	Large Arc Rated Harness
CIP-68304	X-Large Arc Rated Harness



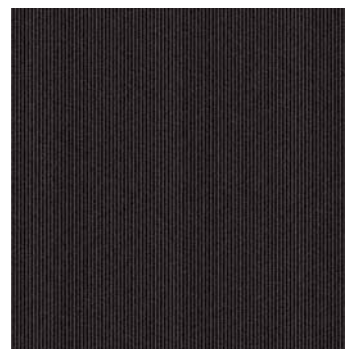
Front View

Rear View

Switchboard Corrugated Matting

• ASTM D178-01 Type I Insulating — Non-Oil Resistant

Switchboard matting is rubber matting designed for electrical insulation, as a floor covering to prevent shock around high voltage electrical apparatus, fuse boxes, switchgear, control panels, and heavy machinery. It meets and exceeds current ASTM, ANSI, (plus IEC Division of ANSI, Tech. Committee-78) specifications for this material. In addition, OSHA requirement's intent to eliminate the electrical hazards of high voltage shock in the workplace is abundantly clear. CIP switchboard matting is designed specifically for this purpose. IT IS NOT DESIGNED TO BE USED AS A "HOT" RAIL BLANKET. ALSO, MATTING WITH PUNCTURES OR CRACKS SHOULD NOT BE PLACED IN SERVICE.



Code#	Dielectric Test Voltage	Thickness	Size	Class	Max Use Voltage
20531	20,000	3/16" n	36" x 12"	1	7,500
20532	20,000	3/16" n	36" x 24"	1	7,500
20533	20,000	3/16" n	36" x 36"	1	7,500
20534	20,000	3/16" n	36" x 48"	1	7,500
20561	20,000	1/4" n	36" x 12"	2	17,000
20562	20,000	1/4" n	36" x 24"	2	17,000
20563	20,000	1/4" n	36" x 36"	2	17,000
20564	20,000	1/4" n	36" x 48"	2	17,000
20541	30,000	1/4" n	36" x 12"	2	17,000
20542	30,000	1/4" n	36" x 24"	2	17,000
20543	30,000	1/4" n	36" x 36"	2	17,000
20544	30,000	1/4" n	36" x 48"	2	17,000
20551	40,000	3/8" n	36" x 12"	3	26,500
20552	40,000	3/8" n	36" x 24"	3	26,500
20553	40,000	3/8" n	36" x 36"	3	26,500
20554	40,000	3/8" n	36" x 48"	3	26,500

Dielectric Boots

Size	Deep Heel Overshoe	17" Full Cut Overshoe
5	21580	
6	21582	
7	21584	21407
8	21586	21408
9	21588	21409
10	21590	21410
11	21592	21411
12	21594	21412
13	21595	21413
14	21596	21414
15	21597	21415
16	21598	21416
17	21599	21417



Dielectric Deep Heel Overshoes provide extra safety when climbing ladders and poles where the deep heel cavity can lock onto the rungs. These boots and overshoes are made from an ozone resistant yellow rubber that's 100% waterproof. The construction is hand-layered in full-cut patterns to fit over work boots. The fabric lining makes them easy to get on and off. The sole is an anti-skid bar tread. All of these overshoes meet ANSI Z41 requirements and have been tested to 20,000 volts.

The 17" Super Dielectric Boot offers a high level of protection from electrical shock to utility workers, electric contractors, and others working dangerously close to electrical hazards. These boots meet ASTM F1117 requirements, and have been tested to 15,000 volts AC and 45,000 volts DC. The boots are completely waterproof and resistant to ozone. The tough fabric lining makes the fit comfortable and easy to take on and off.

Tee Shirt and Arc Goggle Kits and Grounding Sets, Voltage Detector Kits

Safety Rescue Hook

Code#	Width	Length
32514	12	9'



HCR 4 Kits and HCR 2 Kits

HCR 4 Kits

Safety Glasses	Style Clothing Jacket/Overall	Arc Goggle & Helmet/Hood	Insulating Gloves	Leather Protectors	Hot Back Pack	Toolkit 13302	Code #
X	45 cal/cm ² (M)	✓	X	X	✓	X	50321
X	45 cal/cm ² (L)	✓	X	X	✓	X	50322
X	45 cal/cm ² (XL)	✓	X	X	✓	X	50323
X	45 cal/cm ² (2XL)	✓	X	X	✓	X	50324
X	45 cal/cm ² (3XL)	✓	X	X	✓	X	50325
X	45 cal/cm ² (4XL)	✓	X	X	Note 1	X	50326
X	45 cal/cm ² (5XL)	✓	X	X	Note 1	X	50327
X	45 cal/cm ² (6XL)	✓	X	X	Note 1	X	50328

HCR 2* Kits

Safety Glasses	Tee Shirt	Arc Shield/Hood Helmet 10 Cal/cm ²	Insulating Gloves	Leather Protectors	Hot Back Pack	Toolkit 13302	Code #
✓	11 cal/cm ²	✓	Class 00	✓	✓	✓	54055
✓	11 cal/cm ²	✓	Class 0	✓	✓	✓	54056
X	11 cal/cm ²	✓	X	X	✓	✓	54058
✓	11 cal/cm ²	✓	Class 00	✓	✓	X	54060
✓	11 cal/cm ²	✓	Class 0	✓	✓	X	54061
X	11 cal/cm ²	✓	X	X	✓	X	54063

Specify size of tee shirt and insulating gloves
NOTE 1: #52599 Carrying Bag

Grounding Sets

Code#
26800

- 21 kA 15 cycles
- ASTM Grade 5
- Set includes:
 - four-way Connector w/ sleeves
 - four 1 1/2" smooth jaw clamps w/ sleeves
 - double hangar stud
 - contact stud
 - 34' 1/0 Cu cable
 - four pair ferrules



Voltage Detector Kits



43556
43558



43560
43562

- Non-contact, wide range of detection, 80 V to 275 kV, audible and visual indication
- 275 kV automatic self-test beep every two seconds

Code# Description

43556	Non-Contact Selective Voltage Detector
43558	Non-Contact Automatic Voltage Detector
43560	Non-Contact Selective Voltage Detector Kit
43562	Non-Contact Automatic Voltage Detector Kit

COMPOSITE TOOLS

One of the most interesting developments to evolve as a result of the new OSHA regulations on 1000 volt rated hand tools has been the introduction of composite tools.

Until recently, the way tool manufacturers complied with these regulations was to take steel shafted tools and coat or dip them with either a single or double layer of soft protective insulating material. This served the purpose of meeting the initial certification of the necessary 10,000 volt test.

Unfortunately this method enlarges the shafts to a point that they will not fit into restrictive areas. The other major problem is if the tool is used to pry, the soft insulating material can easily be harmed (cut) in such a way that a dangerous phase over could occur. Another major drawback to this type of manufacturing is the safety issue of maintaining or inspecting the integrity of the insulation.

Over the past few years composite tools have entered the market as an alternative to the dipped tools. A spin-off from the Department of Defense and Aerospace technologies, the composite concept was to take advantage of the inherent non-conductive, high strength, and light weight properties of composite materials to transmit torque and leverage to the working end of the tool. This technology allowed for the total elimination of insulating coatings that become nicked, cut, or torn due to normal use. Built much like a Hot Stick if kept clean and dry, there is no conductive path back to the user's hand. Consequently, the danger of flash over or a potential electrocution is significantly reduced.

In examining a cross section of a composite screwdriver, it is surprising to note that the metal tip only extends 5/8 of an inch into the composite shaft. As for the strength of the composite, it is not a concern. A strong person can torque 6 foot pounds, metal yields @ 10 foot pounds, and the composite fails at 20 foot-pounds. The concept is analogous to aircraft propellers that use a metal hub connection and a high strength composite blade, a construction commonly found on many commercial and military aircraft.

The nut drivers offer a similar self-insulating composite shaft with the working end fully shrouded in a protective fiberglass insulation that will allow access into extremely tight areas where double insulated tools will not fit. These tools are very durable and lightweight, exceeding torque values in excess of 34 foot-pounds.

One last advantage is that all composite tools carry a warranty that includes the integrity of the insulation. No other American manufacturer will do this.

Composite tools are slimmer, safer, more durable, and lighter in weight, and the only American made screwdrivers and nut drivers that pass the ASTM extreme cold weather tests.



COMPOSITE TOOLS

Leading Edge Technology



Manufactured from braided, military grade fiberglass composite over a tough polymer core, Composite Tools combine the latest in space age materials technology with traditional heat treated steel tips in a unique family of products ideal for the safety-minded professional tool user.

- Inherent safety — the insulating properties are built into the tool, not coated onto it
- Lightweight
- Better balanced
- Exceeds ASME torque standards
- Exceeds the strength of the proper fastener

Composite Screwdrivers



- Cushion grip
- Slotted electrician's tip
- Phillips tip
- Robertson tip
- Cabinet Tip

Slotted Tip

Code#	Size
00813	1/8" x 3"
00814	1/8" x 6"
00820	1/4" x 7"
00822	5/16" x 4 1/2"
00823	5/16" x 7"
00843	3/16" x 7"
00844	3/16" x 5"
00846	3/16" x 6"
00847	1/4" x 4 1/2"
00848	1/4" x 6"
00849	5/16" x 6"
00850	3/8" x 7"
00932	7/32" x 3 1/2"

Phillips Tip

Code#	Size
00851	#0 x 3"
00852	#1 x 5"
00853	#0 x 6"
00856	#2 x 4 1/2"
00857	#2 x 6"
00858	#2 x 7"
00859	#3 x 6"
00952	#1 x 3"

Robertson Tip

Code#	Size
00860	#0 x 3"
00861	#0 x 6"
00862	#1 x 5"
00864	#2 x 4 1/2"
00866	#2 x 6"
00868	#3 x 7"

Screwdriver Sets

Code#	Pcs.	Sizes
00871	6	#1, #2, 1/8" x 3", 3/16" x 6", 1/4" x 6", 5/16" x 6"
00869	8	#1, #2, 1/8" x 3", 1/8" x 6", 3/16" x 6", 1/4" x 6", 5/16" x 6", 3/8" x 7"
00870	11	#1, #2, #3, 1/8" x 3", 1/8" x 6", 3/16" x 5", 3/16" x 6", 1/4" x 4 1/2", 1/4" x 6", 5/16" x 6", 3/8" x 7"
00872	5	#2, #3, 3/16" x 6", 1/4" x 6", 3/8" x 7"

Composite Holding Screwdrivers & Nut Starters



- Convenient twist tip design for one-hand use
- Fiberglass composite (non-conductive) shaft
- Magnetic on opposite end to help retrieve fasteners.

Holding SD

Code#	Size	Length	Type
00560	3/16"	6"	Slotted
00562	#2	6"	Phillips

Nut Starter

Code#	Capacity
00563	4-40 (2.5)mm to 5/16" (8mm)

Bit Holder Extension Bar for Cordless Drill



Code#
00812

- 5" Length
- Accommodates most standard 1/4" hex bits

Composite Nut Drivers



- Cushion grip
- Hollow hexagon shaft
- 3" and 6" shaft lengths

Speciality Nut Drivers
States Terminal Block

3" Length		6" Length	
Code#	Size	Code#	Size
00903	5/16"	00904	5/16"

3" Length		6" Length	
Code#	Size	Code#	Size
00880	3/16"	00891	3/16"
00881	7/32"	00892	7/32"
00882	1/4"	00893	1/4"
00883	9/32"	00894	9/32"
00884	5/16"	00895	5/16"
00885	11/32"	00896	11/32"
00886	3/8"	00897	3/8"
00887	7/16"	00898	7/16"
00888	1/2"	00899	1/2"
00889	9/16"	00900	9/16"
00890	5/8"	00901	5/8"

Sets

3" Code#	6" Code#	Pcs.	Sizes
00920	00925	7	3/16", 1/4", 5/16", 11/32", 3/8", 7/16", 1/2"
00921	00926	8	3/16", 1/4", 9/32", 5/16", 11/32", 3/8", 7/16", 1/2"
00922	00927	9	3/16", 7/32", 1/4", 9/32", 5/16", 11/32", 3/8", 7/16", 1/2"
00923	00928	10	3/16", 7/32", 1/4", 9/32", 5/16", 11/32", 3/8", 7/16", 1/2", 9/16"

Composite Male Hexagon Drivers



Sets

3" Code#	6" Code#	Pcs.	Sizes
00633	00653	4	3/16", 1/4", 5/16", 3/8"
00634	00654	6	5/32", 3/16", 7/32", 1/4", 5/16", 3/8"

3" Length		6" Length	
Code#	Size	Code#	Size
00620	5/16"	00640	5/16"
00621	3/8"	00641	3/8"
00622	7/16"	00642	7/16"
00623	1/2"	00643	1/2"
00625	5/16"	00645	5/16"
00627	3/8"	00647	3/8"

Composite Hand Driver



- Accommodates 1/4" Sq. Dr. Sockets

Code#	Drive	Length
00810	1/4"	3"
00811	1/4"	6"

Composite Magnetic Bit Tip System



- Accommodates 1/4" Sq. Dr. Sockets
- Powerful magnet (800 grams) securely holds bits in place
- Can also be used as a 1/4" nut driver
- Convenient see-through handle stores eight standard bits

Code#	Bits
10460	3/16" and 1/4" Flat, #1 and #2 Phillips
10461	3/16" and 1/4" Flat, #1 and #2 Robertson

Pliers - Cutters - Joint Tools - Adjustable Wrench

ASTM F1505-01

Linesman Pliers



Code#	Length
10000	7 ⁵ / ₁₆ " Standard
10003	8 ¹ / ₂ " Standard
10005	9 ¹ / ₄ " Premium
10006	9 ¹ / ₄ " Standard
10007	8 ³ / ₄ " Standard w/ Crimper

- New England style, high leverage

Needlenose Pliers



Code#	Length
10008	4"
10010	6"
10013	7 ¹ / ₂ " Bent Nose
10014	7"
10016	8"

- Side cutting feature

Flat Nose Pliers



Code#	Length
10020	6"

- Duck bill

Water Pump Pliers



Code#	Length	Capacity
10066	4"	1/2"
10068	6"	1/2"
10070	10"	1 1/2"
10071	10"	1 1/2" Box Joint
10073	12"	2"
10075	12"	2" Box Joint

- Positive locking design

Slip Joint Pliers



Code#	Length
10050	8"
10052	10"

- Milled teeth & jaws

Crimping Pliers



Code#	Length	Capacity
10060	10"	#10-22 AWG

- Wire cutter built into base
- For insulated and non-insulated terminals

Insulated Inspection Mirror



Code#
14301
14303

- 14" long with 2¹/₄" adjustable mirror
- 15" long with 3¹/₄" adjustable mirror

Cable Cutters



Code#	Length	Capacity
10040	9 ¹ / ₂ "	4/0 Alum, 2/0 Copper
10041*	10"	4/0 Alum, 2/0 Copper
10042	8"	2/0 Alum, 2/0 Copper

* Easily slices up to 100-pair telephone cable

- High leverage

Ratcheting Cable Cutter



Code#
10048

Note: This tool should never be used to cut steel or steel reinforced cable.

- Cuts copper communications cable up to 3" (76 mm) in diameter
- Compact, lightweight, weighs only 3 lbs. (1.13 kg.)
- Easy to use, one-handed operation
- Release lever disengages ratchet, allowing blades to open even in mid-cut
- Safety latch locks blades in closed position for storage
- Features a rubber boot to lodge stationary handle against work surface to multiply manual effort

Insulated Adjustable Magnetic Retrieving Tool



Code#
14302

18" handle

Diagonal Cutting Pliers



Code#	Length
10028	4"
10030	6"
10033	7"
10034	8"

- Standard bevel cutting knives

Plastic Pliers



Code#	Length
10039	7"

- Fiberglass

Adjustable Wrenches



Code#	Length	Jaw Opening
10090	6"	3/4"
10092	8"	1 ⁵ / ₁₆ "
10094	10"	1 1/8"
10096	12"	1 ⁵ / ₈ "
10098	15"	1 ¹¹ / ₁₆ "

- **WARNING: Not 1000V Rated**
Does not meet ASTM standards for insulated tools

Stripper & Crimping Pliers



10080



10081



10085

Code#	Capacity	Length
10080	#10-22 AWG	8 1/4"
10081	#8-30 AWG	7"
10082	#10-28 AWG	6 1/2" V-notch
10084	#10-18 AWG Solid	6 1/2"
10085	#10-22 AWG	6 1/2" In-line
10087	#10-18 AWG	STRANDED



10084

"T" Handle Hexagon Socket Wrench



- Overall length 10"
- Handle length 8"

Code#	Size
10150	3/8"
10152	7/16"
10154	1/2"
10156	9/16"
10158	5/8"
10160	11/16"
10162	3/4"
10164	13/16"
10165	7/8"
10166	15/16"
10167	1"

Offset Screwdriver



- Torx see Code #00590 thru #00603 in Price Sheet

Slotted		Phillips	
Code#	Size	Code	Size
00564	2-4 x 3"	00578	#1 x 4 3/4"
00566	4-6 x 3"	00580	#2 x 5 1/2"
00568	6-8 x 4 1/4"	00582	#3 x 6"
00570	8-10 x 4 1/4"		
00572	10-12 x 5"		
00574	12-14 x 6"		
00576	14-16 x 6"		

Pipe Wrench



Code#	Size	Code#	Size	Code#	Size
01002	5/16"	00970	5 mm	00991	26 mm
01003	11/32"	00971	6 mm	00992	27 mm
01004	3/8"	00972	7 mm	00993	28 mm
01005	13/32"	00973	8 mm	00994	29 mm
01006	7/16"	00974	9 mm	00995	30 mm
01007	15/16"	00975	10 mm	00996	31 mm
01008	1/2"	00976	11 mm	00997	32 mm
01009	17/32"	00977	12 mm	00998	33 mm
01010	9/16"	00978	13 mm	00999	34 mm
01011	19/32"	00979	14 mm	01000	35 mm
01012	5/8"	00980	15 mm	01001	36 mm
01014	11/8"	00981	16 mm		
01016	3/4"	00982	17 mm		
01018	13/16"	00983	18 mm		
01020	7/8"	00984	19 mm		
01022	15/16"	00985	20 mm		
01024	1"	00986	21 mm		
01026	1 1/16"	00987	22 mm		
01028	1 1/8"	00988	23 mm		
01030	1 1/4"	00989	24 mm		
01032	1 1/2"	00990	25 mm		

Hexagon Wrench



- Long Arm

Sets

Code#	Pcs.	Sizes
10141	7	5/64", 3/32", 1/8", 5/32", 3/16", 7/32", 1/4"
10142	10	1/8" thru 3/8", w/o 7/64" & 9/64"
10144	14	1/16" thru 1/2"

Metric Sets

Code#	Pcs.	Sizes
01042	9	1.5 mm thru 10 mm w/o 7 & 9 mm
01044	10	1.5 mm thru 10 mm w/o 9 mm
01064	10	1.5 mm thru 10 mm w/o 7 mm
01065	11	1.5 mm thru 10 mm
01046	12	1.5 mm thru 12 mm
01048	17	1.5 mm thru 24 mm

Code#	Size	Code#	Size
10123	1/16"	01050	1.5 mm
10124	5/64"	01051	2 mm
10125	3/32"	01052	2.5 mm
10126	7/64"	01053	3 mm
10127	1/8"	01054	4 mm
10128	9/64"	01055	5 mm
10129	5/32"	01056	6 mm
10130	3/16"	01057	7 mm
10131	7/32"	01058	8 mm
10132	1/4"	01059	9 mm
10134	5/16"	01060	10 mm
10136	3/8"	01061	12 mm
10138	7/16"	01063	14 mm
10140	1/2"	01066	17 mm
10145	9/16"	01067	19 mm
10146	5/8"	01068	22 mm
10147	3/4"	01069	24 mm
10148	7/8"		
10149	1"		

"T" Handle Hexagon Wrench



- Heat treated for strength
- 6" length

Code#	Size	Code#	Size
10100	5/8"	01070	2 mm
10105	3/32"	01071	2.5 mm
10106	7/64"	01072	3 mm
10107	1/8"	01073	4 mm
10108	9/64"	01074	5 mm
10109	5/32"	01075	6 mm
10110	3/16"	01076	7 mm
10111	7/32"	01077	8 mm
10112	1/2"	01078	9 mm
10114	5/8"	01079	10 mm
10116	3/8"		
10117	7/16"		
10118	1/2"		
10119	9/16"		

Sets

Code#	Pcs.	Sizes
01090	8	2 mm thru 10 mm w/o 7 & 9 mm
01092	10	2 mm thru 10 mm
10120	8	1/8" thru 3/8"
10122	10	3/32" thru 3/8"
10101	10	1/8" thru 1/2"
10102	11	1/8" thru 9/16"
10103	12	3/32" thru 1/2"
10104	13	3/32" thru 9/16"

Fuse Puller



Code#

10440

Insulated Knife & Sheath



Code# Blade

14299 Sickle
14300 Straight

- Fiberglass

T Handle Wrench

Code# Drive

10170 3/8"
10172 1/2"



Geared Style Box Wrenches

Code#	Size	Code#	Size
10442	5/16"	10478	8 mm
10443	3/8"	10479	9 mm
10444	7/16"	10480	10 mm
10445	1/2"	10481	11 mm
10446	9/16"	10482	12 mm
10447	5/8"	10483	13 mm
10448	11/16"	10484	14 mm
10449	3/4"	10485	15 mm
10450	13/16"	10486	16 mm
10451	7/8"	10487	17 mm
10452	15/16"	10488	18 mm
10453	1"	10489	19 mm
		10491	21 mm
		10492	22 mm
		10494	24 mm



Sets

Code#	Pcs.	Sizes
10454	9	5/16" thru 13/16"
10455	10	5/16" thru 7/8"
10456	12	5/8" thru 1"
10498	11	8 mm thru 24 mm

Connector Wrenches



Code#	Length	Size
10410	7"	3/8" x 7/16"
10411	8 3/8"	9/16" x 3/4"
10410	9 1/2"	3/4" x 7/8"

- Ratcheting
- Provides separation between the ratchet ends to eliminate accidental contacts on low voltage installations

Ratcheting Wrenches



Code#	Size
10421	1/4"
10422	5/16"
10423	3/8"
10424	7/16"
10425	1/2"
10426	9/16"
10427	5/8"
10428	11/16"
10429	3/4"
10432	7/8"

- Metric and larger sizes available upon request

Sets

Code#	Pcs.	Sizes
10431	9	1/4" thru 3/4"
10433	10	1/4" thru 5/8"

European Style Drivers



Slotted SD		Phillips SD	
Code#	Size	Code#	Size
13070	3/32" x 3"	13080	#0 x 2 1/2"
13072	5/32" x 4"	13082	#1 x 3"
13074	3/16" x 5"	13084	#2 x 4"
13076	1/4" x 6"	13086	#3 x 6"
13077	5/16" x 7"		
13078	3/8" x 8"		

Screwdriver Sets

Code#	Pcs.	Sizes
13090	7	3/32" x 3", 5/32" x 4", 3/16" x 5", 1/4" x 6", #0 x 2 1/2", #1 x 3", #2 x 4"

Metric Nut Drivers



Screwdriver Sets

Code#	Pcs.	Sizes
05370	9	5.5 mm thru 13 mm

Code#	Description	Size	Length
05300	Metric Nut Driver	5.5 mm	125 mm
05305	Metric Nut Driver	6 mm	125 mm
05310	Metric Nut Driver	7 mm	125 mm
05315	Metric Nut Driver	8 mm	125 mm
05320	Metric Nut Driver	9 mm	125 mm
05325	Metric Nut Driver	10 mm	125 mm
05330	Metric Nut Driver	11 mm	125 mm
05335	Metric Nut Driver	12 mm	125 mm
05340	Metric Nut Driver	13 mm	125 mm

Box End and Open Wrenches



Box End Wrenches

Standard		Metric	
Code#	Size	Code#	Size
10340	1/4"	01402	6 mm
10342	5/16"	01404	7 mm
10344	3/8"	01406	8 mm
10346	7/16"	01408	9 mm
10348	1/2"	01410	10 mm
10350	9/16"	01412	11 mm
10352	5/8"	01414	12 mm
10354	11/16"	01416	13 mm
10356	3/4"	01418	14 mm
10358	13/16"	01420	15 mm
10360	7/8"	01421	16 mm
10362	15/16"	01422	17 mm
10364	1"	01423	18 mm
10366	1 1/16"	01424	19 mm
10368	1 1/8"	01425	20 mm
10370	1 1/4"	01426	21 mm
10373	1 3/8"	01427	22 mm
10374	1 1/2"	01428	23 mm
10376	1 5/8"	01429	24 mm
		01430	25 mm
		01431	26 mm
		01432	27 mm
		01433	28 mm
		01434	29 mm
		01435	30 mm
		01436	32 mm

Boxed End Sets

Code#	Pcs.	Sizes
10372	11	1/4" thru 7/8"
01438	11	10 mm thru 27mm
10371	8	3/8" thru 13/16"
10375	10	1/4" thru 13/16"
10377	13	1/4" thru 1"
10378	11	3/8" thru 1"



Open End Wrenches

Standard		Metric	
Code#	Size	Code#	Size
10300	1/4"	01302	6 mm
10302	5/16"	01304	7 mm
10304	3/8"	01306	8 mm
10306	7/16"	01308	9 mm
10308	1/2"	01310	10 mm
10310	9/16"	01312	11 mm
10312	5/8"	01314	12 mm
10314	11/16"	01316	13 mm
10316	3/4"	01318	14 mm
10318	13/16"	01320	15 mm
10320	7/8"	01321	16 mm
10322	15/16"	01322	17 mm
10324	1"	01323	18 mm
10326	1 1/16"	01324	19 mm
10328	1 1/8"	01325	20 mm
10330	1 1/4"	01326	21 mm
10337	1 3/8"	01327	22 mm
10338	1 1/2"	01328	23 mm
10339	1 5/8"	01329	24 mm
		01330	25 mm
		01331	26 mm
		01332	27 mm
		01333	28 mm
		01334	29 mm
		01335	30 mm
		01336	32 mm

Open End Sets

Code#	Pcs.	Sizes
10332	11	1/4" thru 7/8"
01338	11	10 mm thru 27mm
10329	11	3/8" thru 1"
10331	8	3/8" thru 13/16"
10335	13	1/4" thru 1"
10336	10	1/4" thru 13/16"

Aussie Linesman Pliers

Code# Length

10007	8 3/4" Standard w/ Crimper
-------	----------------------------



- High leverage, Scissor shearing action, Crimper included

Torque Wrenches/ Screwdrivers



Wrenches

Code#	Range	Length	Drive
10173	30 - 150" #	10"	1/4"
10184	30 - 150" #	10"	3/8"
10185	150 - 750" #	15"	3/8"
11185	15# - 75" #	15"	3/8"
11184	50 - 250" #	13"	3/8"
11186	50 - 250" #	22"	1/2"
10186	150 - 750" #	15"	1/2"
10187	30" # - 150" #	19"	1/2"
16080	0 - 80" #	13"	5/16"

Screwdrivers

Code#	Range	Length
10174	6 - 30" #	6 3/8"
10175	2 - 36" #	6 3/8"
10176	2 - 100" OZ	6 3/8"

10177	1/4" Hex to 1/4" Sq. Dr. Adapter
16084	5/16" F to 3/8" M Drive Adapter
16086	5/16" F to 1/2" M Drive Adapter

Reversible Ratchet



Code#	Drive	Length
10178	1/4"	6"
10180	3/8"	7"
10182	1/2"	10"
10470	3/4"	24"

- Raised lever allows reversing while wearing gloves
- Extension bars are required

Extension Bars



Code#	Drive	Length
10168	1/2"	20"
10189	1/4"	2"
10191	1/4"	6"
10188	3/8"	3"
10190	3/8"	6"
10192	3/8"	12"
10193	1/2"	2 1/2"
10194	1/2"	5"
10196	1/2"	10"

Breaker Bar



Code#	Drive	Length
10197	3/8"	9"
10198	1/2"	12"

Hexagon Sockets



3/8" Drive

Code#	Standard Depth Size	Code#	Deep Depth Size
10200	5/16"	10220	3/8"
10201	1/4"	10222	7/16"
10202	3/8"	10223	5/8"
10204	7/16"	10224	1 1/8"
10206	1 1/2"	10226	9/2"
10208	9/16"	10228	5/8"
10210	5/8"	10230	1 1/8"
10212	1 1/8"	10232	3 1/8"
10214	3/4"	10233	1 3/8"
10216	1 3/8"	10234	7/8"
10217	1 5/8"	10235	1 5/8"
10218	7/8"	10236	1"
10221	1"		

* Other ranges available, see Price Sheet for details

Code#	Drive	Range	Depth
01100-01126	1/4"	5/32" - 9/16"	STD
01140-01157	1/4"	4 mm - 13 mm	STD
01166-01182	3/8"	6 mm - 22 mm	STD
01266-01282	3/8"	6 mm - 22 mm	DEEP
01192-01214	1/2"	10 mm - 32 mm	STD
01479-01496	1/2"	9 mm - 26 mm	DEEP

1/2" Drive

Code#	Standard Depth Size	Code#	Deep Depth Size
10240	3/8"	10270	3/8"
10242	7/16"	10272	7/16"
10244	1 1/2"	10274	1 1/2"
10246	9/16"	10276	9/16"
10248	5/8"	10278	5/8"
10250	1 1/8"	10280	1 1/8"
10252	3/4"	10282	3/4"
10254	1 3/4"	10284	1 3/4"
10256	7/8"	10286	7/8"
10258	1 5/8"	10288	1 5/8"
10260	1"	10290	1"
10262	1 1/16"	10292	1 1/16"
10264	1 1/8"	10294	1 1/8"
10266	1 1/4"	10295	1 1/4"
10268	1 3/8"		
10267	1 1/2"		
10269	1 5/8"		

Male Hexagon Adaptor



Code#	1/4" Drive - 2" Lg Size	3/8" Drive - 2 1/4" Lg Size	4" Lg Code#
01231	1/8"	01244	1/8"
01232	5/32"	01246	5/32"
01234	3/16"	01248	3/16"
01236	7/16"	01250	7/16"
01238	1 1/32"	01252	1 1/32"
01240	5/16"	01254	5/16"
		01256	3/8"
		01258	7/8"
		01260	1 1/2"

Sets

Code#	Pcs.	Drive	Sizes
01241	6	1/4"	1/8" - 5/16"
01261	4	3/8"	1/4" - 5/16", 3/8", 7/16"
01262	7	3/8"	1/8" - 1/2", w/o 5/32" & 7/32"
01263	9	1/4"	1/8" - 1/2"
01230	8	1/4"	1/8" - 3/4"
01348	7	3/8"	4 mm - 10mm 5"
01368	8	1/2"	1 1/4" - 3/4" 4"
01388	9	3/8"	1/8" - 1/2" 4"
01400	10	1/2"	6 mm - 19 mm

1/2" Drive - 2" Lg

Code#	Size
01390	6 mm
01391	8 mm
01392	10 mm
01393	12 mm
01394	13 mm
01395	14 mm
01396	15 mm
01397	17 mm
01398	18 mm
01399	19 mm

3/8" Drive - 2 1/4" Lg 5" Lg

Code#	Size	Code#
01294	4 mm	01340
01295	5 mm	01341
01296	6 mm	01342
01297	7 mm	01343
01298	8 mm	01344
01299	9 mm	01345
01300	10 mm	01346

1/2" Drive - 2 3/4" Lg

Code#	Size
01218	1/4"
01219	5/16"
01220	3/8"
01222	7/8"
01224	1 1/2"
01226	9/16"
01228	5/8"
01229	3/4"

4" Lg

Code#	Size
01350	1/4"
01352	5/16"
01354	3/8"
01356	7/16"
01358	1 1/2"
01360	9/16"
01362	5/8"
01364	3/4"

Socket & Ratchet Sets



Code#	Pcs.	Description
01130	11	1/4" Dr. 6 Pt. Socket Set, 5/32" thru 9/16"
01131	11	1/4" Dr. Ratchet, 2" Ext., Sockets 7/32" thru 9/16"
01132	12	1/4" Dr. Ratchet, 2" Ext., Sockets 3/16" thru 9/16"
01138	18	1/4" Dr. Ratchet, 2" Ext., Sockets 3/16" thru 9/16", Male Hex Bits 1/8" thru 5/16"
01160	14	1/4" Dr. Ratchet, 2" Ext., Sockets 4mm thru 12mm
01188	15	3/8" Dr. Ratchet, 3" Ext., Sockets 10mm thru 22mm
01190	13	3/8" Dr. Deep Metric Socket Set 10mm thru 22mm
01215	17	1/2" Dr. Ratchet, 5" Ext., Sockets 10mm thru 32mm
01216	15	1/2" Dr. Socket Set, 10mm thru 32mm
01283	13	3/8" Dr. Ratchet, 3" Ext., Sockets 10mm thru 19mm & 22mm DEEP
01284	19	3/8" Dr. Ratchet, 3" Ext., Sockets 6mm thru 22mm DEEP
10179	12	1/4" Dr. Ratchet, 2" Ext., Sockets 3/16" thru 1/2"
10181	9	3/8" Dr. Ratchet, 3" Ext., Sockets 3/8" thru 3/4"
10183	14	1/2" Dr. Ratchet, 5" Ext., Sockets 3/8" thru 1" & Breaker Bar
10199	12	3/8" Dr. Ratchet, 3" Ext., Sockets 5/16" thru 7/8"
10219	10	3/8" Dr. Sockets 5/16" thru 7/8"
10238	9	3/8" Dr. Ratchet, 3" Ext., Deep Sockets 3/8" thru 3/4"
10239	12	3/8" Dr. Ratchet, 3" & 6" Ext., Sockets 3/8" thru 7/8"
11198	25	1/2" Dr. Ratchet, 5" Ext., 8" "T" Handle, Sockets 3/8" thru 1 1/4", Male Hex Bits 1/4" thru 3/4"
11199	11	3/8" Dr. Ratchet, 3" & 6" Ext., Sockets 3/8" thru 1 1/4"
11200	11	3/8" Dr. Ratchet, 3" & 6" Ext., Deep Sockets 3/8" thru 1 3/16"
11215	10	3/8" Dr. Metric Socket Set, 10mm thru 19mm
11210	17	1/2" Dr. Ratchet, 5" and 10" Ext., Deep Sockets 3/8" thru 1" Breaker Bar

Basic Electrician's Roll (9 pcs.)



- 9" Linesman Pliers
- 7½" Diagonal Cutting Pliers
- 7" Needle Nose Pliers
- Combination Stripper & Crimper
- #2 x 6" Square (Robertson) Screwdriver*
- ¾" x 6" Slotted Screwdriver*
- ¼" x 6" Slotted Screwdriver*
- # 1 x 5" Phillips Screwdriver*
- # 2 x 4½" Phillips Screwdriver*

Code#

* 13302

Meter Reader (Routeman) Roll (10 pcs.)



- 8" Needle Nose Pliers
- ¾" x 6" Slotted Screwdriver*
- ¼" x 6" Slotted Screwdriver*
- # 1 x 5" Phillips Screwdriver*
- # 2 x 7" Phillips Screwdriver*
- Fuse Puller
- Plastic Pliers
- 5/16" Nut Driver*
- 3/8" Nut Driver*
- ½" Nut Driver*

Code#

* 13393 w/ Composite Tools 3" Nut Drivers
* 13394 w/ Composite Tools 6" Nut Drivers

Meter Service Roll (12 pcs.)



- 9" Linesman Pliers
- 7½" Diagonal Cutting Pliers
- 8" Needle Nose Pliers
- ¼" x 3" Slotted Screwdriver*
- #2 x 6" Square (Robertson) Screwdriver*
- ¾" x 6" Slotted Screwdriver*
- ¼" x 6" Slotted Screwdriver*
- Fuse Puller
- Plastic Pliers
- 5/16" Nut Driver*
- 3/8" Nut Driver*
- ½" Nut Driver*

Code#

* 13383 w/ Composite Tools 3" Nut Drivers
* 13384 w/ Composite Tools 6" Nut Drivers

Gas Service Roll (11 pcs.)



- 7" Linesman Pliers
- 7½" Diagonal Cutting Pliers
- 8" Needle Nose Pliers
- ¼" x 3" Slotted Screwdriver*
- ¾" x 5" Slotted Screwdriver*
- ¼" x 6" Slotted Screwdriver*
- Fuse Puller
- Plastic pliers
- 5/16" Nut Driver*
- 3/8" Nut Driver*
- ½" Nut Driver*

Code#

* 13372 w/ Composite Tools 3" Nut Drivers
* 13373 w/ Composite Tools 6" Nut Drivers

Tool Roll (7 pcs.)



- 9" Linesman Pliers
- 7½" Diagonal Cutting Pliers
- 6" Needle Nose Pliers
- Combination Stripper & Crimper
- Fuse Puller
- Crimper
- Plastic Pliers

Code#

13360

Nut Screwdriver Roll (11 pcs.)



- ¼" x 3" Slotted Screwdriver*
- #2 x 6" Square (Robertson) Screwdriver*
- ¾" x 6" Slotted Screwdriver*
- ¼" x 6" Slotted Screwdriver*
- ¾" Nut Driver*
- 7/32" Nut Driver*
- ¼" Nut Driver*
- 9/32" Nut Driver*
- 5/32" Nut Driver*
- 11/16" Nut Driver*
- 3/8" Nut Driver*

Code#

* 13352 3" Nut Drivers
* 13353 6" Nut Drivers

Substation Roll



Code# Description

13432 Consists of #13352 and #13360*
13433 Consists of #13353 and #13360

Telecommunications Tool Roll (16 pcs.)



- 9" Linesman Pliers
- 6" Needle Nose Pliers
- 8" Slip Joint Pliers
- ¾" x 5" Elect. Slotted Screwdriver w/Cushion Grip*
- ¼" x 4½" Slotted Screwdriver w/Cushion Grip*
- 5/16" x 6" Slotted Screwdriver w/Cushion Grip*
- ¾" x 7" Slotted Screwdriver w/Cushion Grip*
- # 2 x 4½" Phillips Screwdriver w/Cushion Grip*
- ¾" Reversible Ratchet
- ¾" Reversible Torque Wrench 30-150"#
- ¾" Drive 3" Extension
- ¾", 1/16", 1/2", 9/16" Hex Sockets ¾" Drive, STD Depth
- 5/8" Hex Socket ¾" Drive Deep Depth

Code#

* 13442 Tools

Belt Pouches



* Flashlight and tape not included

* 8" Adjustable Wrench not insulated per ASTM F1505 Standard - insulated against grounding only

13202 Meter Service Pouch

- Composite Knife
- 1/8" x 3" Slotted Composite Screwdriver
- 1/4" x 6" Slotted Composite Screwdriver
- 5/8" x 6" Slotted Composite Screwdriver
- #2 x 4 1/2" Phillips Composite Screwdriver
- Wire Stripper
- 7 1/2" Diagonal Cutter
- 10" Water Pump Pliers
- * 8" Adjustable Wrench
- 9" Linesman Pliers
- 6" Needle Nose
- Slotted Composite Holding Screwdriver
- 3/8" x 3" Composite Hex Nut Driver
- 1/2" x 3" Composite Hex Nut Driver

13204 Electrician's Service Pouch

- Composite Knife
- 1/8" x 3" Slot. Composite Screwdriver
- 3/16" x 5" Slot. Composite Screwdriver
- 1/4" x 6" Slot. Composite Screwdriver
- #2 x 4 1/2" Phillips Composite Screwdriver
- Wire Stripper
- 7 1/2" Diagonal Cutter
- 10" Water Pump Pliers
- Fuse Puller
- 9" Linesman Pliers
- 6" Needle Nose
- 3/8" x 3" Composite Hex Nut Driver
- 1/4" x 3" Composite Hex Nut Driver
- 5/16" x 3" Composite Hex Nut Driver
- 3/8" x 3" Composite Hex Nut Driver

Building Maintenance Tool Roll



Code#	Description
00887	7/16" x 3" Nut Driver
10039	Plastic Pliers
10180	3/8" Rev. Ratchet
10188	3" Extension Bar
10204	7/16" Hex Socket
10208	9/16" Hex Socket
10354	1 1/16" Box End WR
10314	1 1/16" Open End WR
14300	Knife

Code#
13548

Paper Industry Basic Tool Roll



Code#	Description
00813	1/8" x 3" Slotted Screwdriver
00814	1/4" x 6" Slotted Screwdriver
00846	3/16" x 6" Slot Screwdriver
00848	1/4" x 6" Slot Screwdriver
00852	1 x 5" Phillips Screwdriver
00856	2 x 4 1/2" Phillips Screwdriver
10013	7" Needle Nose Pliers
10060	Crimper
10084	Wire Strippers

Code#
13547

Automotive Medium Tool Roll



Code#	Description
00844	3/16" x 5" Slotted Screwdriver
00848	1/4" x 6" Slotted Screwdriver
00849	5/16" x 6" Slotted Screwdriver
00852	1 x 5" Phillips Screwdriver
00856	2 x 4 1/2" Phillips Screwdriver
10006	9" Linesman Pliers
10013	7" Needle Nose Pl
10033	7" Diagonal Pliers
10080	Wire Strippers

Code#
00021

Automotive Large Tool Roll



Code#	Description
00846	3/16" x 6" Slotted Screwdriver
00848	1/4" x 6" Slotted Screwdriver
00849	5/16" x 6" Slotted Screwdriver
00852	#1 x 5" Phillips Screwdriver
00858	#2 x 7" Phillips Screwdriver
00859	#3 x 6" Phillips Screwdriver
10013	7" Needle Nose Pliers
10034	8" Diagonal Pliers
10060	Crimper
10073	12" Water Pump Pliers
10080	Wire Strippers
10440	Fuse Puller

Code#
00015

Automotive Stamping Tool Roll



Code#	Description
00846	3/16" x 6" Slotted Screwdriver
00848	1/4" x 6" Slotted Screwdriver
00852	#1 x 5" Phillips Screwdriver
00856	#2 x 4 1/2" Phillips Screwdriver
10010	6" Needle Nose Pliers
10030	6" Diagonal Pliers
10060	Crimper
10080	Wire Strippers
10440	Fuse Puller

Code#
13545

Automotive Tool Roll



Code#	Description
00813	1/8" x 3" Slotted Screwdriver
00846	3/16" x 6" Slotted Screwdriver
00848	1/4" x 6" Slotted Screwdriver
00851	#0 x 3" Phillips Screwdriver
00852	#1 x 5" Phillips Screwdriver
00856	#2 x 4 1/2" Phillips Screwdriver
10010	6" Needle Nose Pliers
10030	6" Diagonal Pliers
10060	Crimper
10084	Wire Strippers
10440	Fuse Puller

Code#
13546

Utility Tool Kit



Code#	Description
00562	#2 x 6" Phillips Holding Screwdriver
00558	8-10 x 2 1/2" Offset Screwdriver
00559	8-10 x 5 3/8" Offset Screwdriver
00570	8-10 x 4 1/4" Slotted Offset Screwdriver
00813	1/8" x 3" Electrician's Slot Composite Screwdriver
00844	3/16" x 5" Electrician's Slot Composite CG Screwdriver
00843	3/16" x 7" Electrician's Slot Composite Screwdriver
00848	1/4" x 6" Electrician's Slot Composite CG Screwdriver
00852	#1 x 5" Phillips Composite CG Screwdriver

Code#	Description
00856	#2 x 4 1/2" Phillips Composite CG Screwdriver
00880	3/16" x 3" Hollow Hex Shank Composite Nut Driver
00885	1 1/2" x 3" Hollow Hex Shank Composite Nut Driver
00886	3/8" x 3" Hollow Hex Shank Composite Nut Drive
01003	1 1/2" x 4" Pipe Wrench (Single End)
10010	6" Needle Nose Pliers
10030	6" Diagonal Cutting Pliers
10060	10" Crimping Pliers
10084	Wire Stripper Solid

Code#

13402

Utility Field Kit
(22 pcs.) 1/2" Drive



Code#	Description
00813	1/8" x 3" Electrician's Slot Composite Screwdriver
00847	1/4" x 4 1/2" Electrician's Slot Composite CG Screwdriver
00848	1/4" x 6" Electrician's Slot Composite CG Screwdriver
00852	#1 x 5" Phillips Composite CG Screwdriver
00895	5/16" x 6" Hollow Hex Shank Composite Nut Driver
00897	3/8" x 6" Hollow Hex Shank Composite Nut Driver
00898	7/16" x 6" Hollow Hex Shank Composite Nut Driver
00899	1/2" x 6" Hollow Hex Shank Composite Nut Driver
00900	9/16" x 6" Hollow Hex Shank Composite Nut Driver
00901	5/8" x 6" Hollow Hex Shank Composite Nut Driver
10274	1/2" 1/2" Dr. Hex Socket 12 Pt. Deep

Code#	Description
10272	7/16" 1/2" Dr. Hex Socket 12 Pt. Deep
10172	1/2" Dr. "T" Handle Wrench
10182	10" 1/2" Dr. Reversible Ratchet
10194	5" 1/2" Drive Extension Bar
10110	3/16" x 6" "T" Handle Hex Wrench
10412	3/4" x 7/8" Bug Wrench
10039	7" Plastic (Holding) Pliers
10005	9 1/2" Premium Linesman Pliers with Crimper
10033	7 1/2" Diagonal Cutting Pliers
10060	10" Crimping Pliers
10016	8" Needle Nose Pliers

Code#

16035

Utility Field Kit
(30 pcs.) 1/2" Drive



Code#	Description
00813	1/8" x 3" Electrician's Slot Composite Screwdriver
00847	1/4" x 4 1/2" Electrician's Slot Composite CG Screwdriver
00852	#1 x 5" Phillips Composite CG Screwdriver
00848	1/4" x 6" Electrician's Slot Composite CG Screwdriver
00895	5/16" x 6" Hollow Hex Shank Composite Nut Driver
00897	3/8" x 6" Hollow Hex Shank Composite Nut Driver
00898	7/16" x 6" Hollow Hex Shank Composite Nut Driver
00899	1/2" x 6" Hollow Hex Shank Composite Nut Driver
00900	9/16" x 6" Hollow Hex Shank Composite Nut Driver
00901	5/8" x 6" Hollow Hex Shank Composite Nut Driver
10005	9 1/2" Premium Linesman Pliers with Crimper
10016	8" Needle Nose Pliers
10033	7 1/2" Diagonal Cutting Pliers
10039	7" Plastic (Holding) Pliers
10060	10" Crimping Pliers

Code#	Description
10110	3/16" x 6" "T" Handle Hex Wrench
10172	1/2" Dr. "T" Handle Wrench
10182	10" 1/2" Dr. Reversible Ratchet
10196	10" 1/2" Drive Extension Bar
10194	5" 1/2" Drive Extension Bar
10272	7/16" 1/2" Dr. Hex Socket 12 Pt. Deep
10274	1/2" 1/2" Dr. Hex Socket 12 Pt. Deep
10276	9/16" 1/2" Dr. Hex Socket 12 Pt. Deep
10278	5/8" 1/2" Dr. Hex Socket 12 Pt. Deep
10280	11/16" 1/2" Dr. Hex Socket 12 Pt. Deep
10282	3/4" 1/2" Dr. Hex Socket 12 Pt. Deep
10284	13/16" 1/2" Dr. Hex Socket 12 Pt. Deep
10286	7/8" 1/2" Dr. Hex Socket 12 Pt. Deep
10288	15/16" 1/2" Dr. Hex Socket 12 Pt. Deep
10412	3/4" x 7/8" Bug Wrench

Code#

16034

Utility Service Kit



Code#	Description
00560	3/16" x 6" Slotted Holding Screwdriver
00562	#2 x 6" Phillips Holding Screwdriver
00812	5" Insulated Composite Extension Bar
01220	3/8" x 2 3/4" Male Hex Bit 1/2" Drive
01222	7/16" x 2 3/4" Male Hex Bit 1/2" Drive
01224	1/2" x 2 3/4" Male Hex Bit 1/2" Drive
10039	7" Plastic (Holding) Pliers
10182	10" 1/2" Dr. Reversible Ratchet
10196	10" 1/2" Drive Extension Bar
10274	1/2" 1/2" Dr. Hex Socket 12 Pt. Deep
10276	9/16" 1/2" Dr. Hex Socket 12 Pt. Deep
10282	3/4" 1/2" Dr. Hex Socket 12 Pt. Deep
10460	7" Magnetic Bit Tip System

Code#

00001

Insulated Tool Sets



- 9" Linesman Pliers
- 6" Diagonal Cutting Pliers
- 6" Needle Nose Pliers
- Crimper
- 8" Slip Joint
- 10" Water Pump Pliers
- 3/16" x 5" Cushion Grip Elect. Slotted Screwdriver*
- 1/4" x 6" Cushion Grip Slotted Screwdriver*
- 1/4" x 4 1/2" Cushion Grip Slotted Screwdriver*
- 5/16" x 6" Cushion Grip Slotted Screwdriver*
- # 1 x 5" Cushion Grip Phillips Screwdriver*
- # 2 x 4 1/2" Cushion Grip Phillips Screwdriver*
- 3/16", 1/4", 5/16", 3/8" Hex Wrench
- 1/4", 5/16", 3/8", 7/16", 1/2" Cushion Grip Hex Nut Driver (3" Shaft)*

Code#

- * 13407 3" Nut Drivers
- * 13409 6" Nut Drivers

Aviation Industry Hot Box®



Code#	Description	Code#	Description
00813	1/8" x 3" Electrician's Slotted Screwdriver	10068	6" Water Pump Pliers
00814	1/8" x 6" Electrician's Slotted Screwdriver	10073	12" Water Pump Pliers
00844	3/16" x 5" Electrician's Slotted Screwdriver	10124	5/64" Long Arm Hex Key
00848	1/4" x 6" Electrician's Slotted Screwdriver	10125	3/32" Long Arm Hex Key
00851	#0 x 3" Insulated Phillips Screwdriver	10127	1/8" Long Arm Hex Key
00856	#2 x 4 1/2" Insulated Phillips Screwdriver	10129	5/32" Long Arm Hex Key
00952	#1 x 3" Insulated Phillips Screwdriver	10130	3/16" Long Arm Hex Key
01100	5/32" 1/4" Dr. Hex Socket STD	10131	7/32" Long Arm Hex Key
01102	3/16" 1/4" Dr. Hex Socket STD	10132	1/4" Long Arm Hex Key
01104	7/32" 1/4" Dr. Hex Socket STD	10178	6" 1/4" Dr. Reversible Ratchet
01106	1/4" 1/4" Dr. Hex Socket STD	10180	7" 3/8" Dr. Reversible Ratchet
01108	9/32" 1/4" Dr. Hex Socket STD	10188	3" 3/8" Dr. Extension Bar
01110	5/16" 1/4" Dr. Hex Socket STD	10189	2 1/2" Extension Bar
01112	11/32" 1/4" Dr. Hex Socket STD	10190	6" 3/8" Dr. Extension Bar
01114	3/8" 1/4" Dr. Hex Socket STD	10202	3/8" 3/8" Dr. Hex Socket 12 pt. STD
01118	7/16" 1/4" Dr. Hex Socket STD	10204	7/16" 3/8" Dr. Hex Socket 12 pt. STD
01122	1/2" 1/4" Dr. Hex Socket STD	10206	1/2" 3/8" Dr. Hex Socket 12 pt. STD
01126	9/16" 1/4" Dr. Hex Socket STD	10208	9/16" 3/8" Dr. Hex Socket 12 pt. STD
01310	10 mm Open End Wrench	10210	5/8" 3/8" Dr. Hex Socket 12 pt. STD
01312	11 mm Open End Wrench	10212	11/16" 3/8" Dr. Hex Socket 12 pt. STD
01314	12 mm Open End Wrench	10214	3/4" 3/8" Dr. Hex Socket 12 pt. STD
01316	13 mm Open End Wrench	10216	13/16" 3/8" Dr. Hex Socket 12 pt. STD
01318	14 mm Open End Wrench	10300	1/4" Long Style Open End Wrench
01320	15 mm Open End Wrench	10302	5/16" Long Style Open End Wrench
10003	8" Linesman Pliers	10304	3/8" Long Style Open End Wrench
10030	6" Diagonal Cutting Pliers	10306	7/16" Long Style Open End Wrench
10080	Combination Stripper and Crimping Pliers	10308	1/2" Long Style Open End Wrench
10008	4" Needle Nose Pliers	10310	9/16" Long Style Open End Wrench
		10440	Fuse Puller

Code#

16044

Insulated Tool Set



Code#	Description	Code#	Description
00820	1/4" x 7" Electrician's Slot Composite CG Screwdriver	10006	9 1/2" Linesman Pliers
00844	3/16" x 5" Electrician's Slot Composite CG Screwdriver	10010	6" Needle Nose Pliers
00847	1/4" x 4 1/2" Electrician's Slot Composite CG Screwdriver	10030	6" Diagonal Cutting Pliers
00849	5/16" x 6" Electrician's Slot Composite CG Screwdriver	10040	9 1/2" Cable Cutters
00850	3/8" x 7" Electrician's Slot Composite CG Screwdriver	10050	8" Slip Joint Pliers
00852	#1 x 5" Phillips Composite CG Screwdriver	10060	10" Crimping Pliers
00856	#2 x 4 1/2" Phillips Composite CG Screwdriver	10070	10" Water Pump Pliers
00858	#2 x 7" Phillips Composite CG Screwdriver		

Code#

13404

Food Processing Maintenance Hot Box®



Code#	Description	Code#	Description
00891	3/16" x 6" Hollow Hex Shank Composite Nut Driver	00898	7/16" x 6" Hollow Hex Shank Composite Nut Driver
00892	7/32" x 6" Hollow Hex Shank Composite Nut Driver	00899	1/2" x 6" Hollow Hex Shank Composite Nut Driver
00893	1/4" x 6" Hollow Hex Shank Composite Nut Driver	10005	9 1/2" Premium Linesman Pliers
00894	9/32" x 6" Hollow Hex Shank Composite Nut Driver	10013	7" Needle Nose Pliers
00895	5/16" x 6" Hollow Hex Shank Composite Nut Driver	10033	7 1/2" Diagonal Cutting Pliers
00896	11/32" x 6" Hollow Hex Shank Composite Nut Driver	10060	10" Crimping Pliers
00897	3/8" x 6" Hollow Hex Shank Composite Nut Driver	10070	10" Water Pump Pliers
		10073	12" Water Pump Pliers

Code#

13451

Tool Boxes



All Sets Contain:

- 9" Linesman Pliers
- 7 1/2" Diagonal Cutting Pliers
- 7" Needle Nose Pliers
- Flash Light
- 1/8" x 3" Slotted Screwdriver*
- 3/8" x 5" Slotted Screwdriver*
- 1/4" x 6" Slotted Screwdriver*
- # 1 x 5" Phillips Screwdriver*
- # 2 x 4 1/2" Phillips Screwdriver*
- Foam Insert Case
- Tool Box Style

Additional Contents

Deluxe Electrician's Tool Box

- 1/2" Reversible Ratchet
- 5" Extension 1/2" Drive
- 10" Extension 1/2" Drive
- Hex Sockets:
3/8", 7/16", 1/2", 9/16", 5/8", 11/16", 3/4"

Code#

- * 13411
- * 13413

Std. Maintenance Tool Box

- 1/2" Drive 8" "T" Handle
- Hex Sockets:
3/8", 7/16", 1/2", 9/16", 5/8", 11/16", 3/4"
- Open End Wrench:
3/8", 7/16", 1/2", 9/16", 5/8", 11/16", 3/4"

Code#

- * 13401
- * 13403

Deluxe Maintenance Tool Box

- 1/2" Reversible Ratchet
- 5" Extension 1/2" Drive
- Hex Sockets:
3/8", 7/16", 1/2", 9/16", 5/8", 11/16", 3/4"
- Open End Wrench:
3/8", 7/16", 1/2", 9/16", 5/8", 11/16", 3/4"

Code#

- * 13421
- * 13423

1/2" Drive Electrician's Hot Box®



Code# Description

- 00880 3/16" x 3" Hollow Hex Shank Composite Nut Driver
- 00885 1 1/16" x 3" Hollow Hex Shank Composite Nut Driver
- 00850 3/8" x 7" Electrician's Slot Composite CG Screwdriver
- 01352 5/16" x 4" Long Male Hex Bit 1/2" Drive
- 01354 3/16" x 4" Long Male Hex Bit 1/2" Drive
- 01356 7/16" x 4" Long Male Hex Bit 1/2" Drive
- 01358 1/2" x 4" Long Male Hex Bit 1/2" Drive
- 01360 9/16" x 4" Long Male Hex Bit 1/2" Drive
- 01362 5/8" x 4" Long Male Hex Bit 1/2" Drive
- 10040 9 1/2" Cable Cutters
- 10073 12" Water Pump Pliers
- 10110 3/16" x 6" "T" Handle Hex Wrench
- 10112 1/4" x 6" "T" Handle Hex Wrench
- 10114 5/16" x 6" "T" Handle Hex Wrench
- 10116 3/8" x 6" "T" Handle Hex Wrench
- 10117 7/16" x 6" "T" Handle Hex Wrench
- 10118 1/2" x 6" "T" Handle Hex Wrench
- 10182 10" 1/2" Dr. Reversible Ratchet
- 10194 5" 1/2" Dr. Extension Bar

Code# Description

- 10196 10" 1/2" Dr. Extension Bar
- 10187 19" 1/2" Dr. Torque Wrench 30 - 150 ft.#
- 10240 3/8" 1/2" Dr. Hex Socket 12 pt. STD
- 10242 7/16" 1/2" Dr. Hex Socket 12 pt. STD
- 10244 1/2" 1/2" Dr. Hex Socket 12 pt. STD
- 10246 9/16" 1/2" Dr. Hex Socket 12 pt. STD
- 10248 5/8" 1/2" Dr. Hex Socket 12 pt. STD
- 10250 1 1/16" 1/2" Dr. Hex Socket 12 pt. STD
- 10252 3/4" 1/2" Dr. Hex Socket 12 pt. STD
- 10272 7/16" 1/2" Dr. Hex Socket 12 pt. DEEP
- 10274 1/2" 1/2" Dr. Hex Socket 12 pt. DEEP
- 10276 9/16" 1/2" Dr. Hex Socket 12 pt. DEEP
- 10278 5/8" 1/2" Dr. Hex Socket 12 pt. DEEP
- 10280 1 1/8" 1/2" Dr. Hex Socket 12 pt. DEEP
- 10282 3/4" 1/2" Dr. Hex Socket 12 pt. DEEP
- 10284 1 3/16" 1/2" Dr. Hex Socket 12 pt. DEEP
- 10286 7/8" 1/2" Dr. Hex Socket 12 pt. DEEP
- 10288 1 5/16" 1/2" Dr. Hex Socket 12 pt. DEEP
- 10290 1" 1/2" Dr. Hex Socket 12 pt. DEEP

Code#

- 16053

Small Automotive Tool Kit



Code# Description

- 00846 3/16" x 6" Slotted Screwdriver
- 00852 #1 x 5" Phillips Screwdriver
- 10080 Wire Stripper
- 10440 Fuse Puller

Code#

- 00020

Telecommunications Hot Box® (21 pcs.)



Code# Description

- 00897 3/8" x6" Hollow Hex Shank Composite Nut Driver
- 00898 7/16" x6" Hollow Hex Shank Composite Nut Driver
- 00899 1/2" x6" Hollow Hex Shank Composite Nut Driver
- 00900 9/16" x6" Hollow Hex Shank Composite Nut Driver
- 10180 7" 3/8" Dr. Reversible Ratchet
- 10188 3" 3/8" Dr. Extension Bar
- 10190 6" 3/8" Dr. Extension Bar
- 10202 3/8" 3/8" Dr. Hex Socket 12 pt. STD
- 10204 7/16" 3/8" Dr. Hex Socket 12 pt. STD
- 10206 1 1/16" 3/8" Dr. Hex Socket 12 pt. STD
- 10208 9/16" 3/8" Dr. Hex Socket 12 pt. STD

Code# Description

- 10210 5/8" 3/8" Dr. Hex Socket 12 pt. STD
- 10212 1 1/16" 3/8" Dr. Hex Socket 12 pt. STD
- 10214 3/4" 3/8" Dr. Hex Socket 12 pt. STD
- 10216 1 3/16" 3/8" Dr. Hex Socket 12 pt. STD
- 10312 5/8" Long Style Open End Wrench
- 10310 9/16" Long Style Open End Wrench
- 10308 1/2" Long Style Open End Wrench
- 10306 7/16" Long Style Open End Wrench
- 10304 3/8" Long Style Open End Wrench
- 10302 5/16" Long Style Open End Wrench

Code#

- 16072

**Telecommunications
Hot Box® (24 pcs.)**



Code#	Description
00846	3/16" x 6" Electrician's Slot Composite CG Screwdriver
00849	5/16" x 6" Electrician's Slot Composite CG Screwdriver
00856	#2 x 4 1/2" Phillips Composite CG Screwdriver
10006	9 1/2" Linesman Pliers
10016	8" Needle Nose Pliers
10033	7 1/2" Diagonal Cutting Pliers
10070	10" Water Pump Pliers
10180	7" 3/8" Dr. Reversible Ratchet
10184	10" 3/8" Dr. Torque Wrench 30 - 150" #
10188	3" 3/8" Dr. Extension Bar
10190	6" 3/8" Dr. Extension Bar
10204	7/16" 3/8" Dr. Hex Socket 12 pt. STD

Code#
16073

Code#	Description
10206	1 1/16" 3/8" Dr. Hex Socket 12 pt. STD
10208	9/16" 3/8" Dr. Hex Socket 12 pt. STD
10214	3/4" 3/8" Dr. Hex Socket 12 pt. STD
10306	7/16" Long Style Open End Wrench
10308	1 1/16" Long Style Open End Wrench
10310	9/16" Long Style Open End Wrench
10316	3/4" Long Style Open End Wrench
10344	3/8" Long Style Box End Wrench
10346	7/16" Long Style Box End Wrench
10348	1 1/16" Long Style Box End Wrench
10350	9/16" Long Style Box End Wrench
10356	3/4" Long Style Box End Wrench

**Telecommunications
Hot Box® (35 pcs.)**



Code#	Description
01329	24 mm Open End Wrench
01429	24 mm Box End Wrench
10180	7" 3/8" Dr. Reversible Ratchet
10187	19" 1 1/2" Dr. Torque Wrench 30 - 150 ft. #
10188	3" 3/8" Dr. Extension Bar
10194	5" 1/2" Dr. Extension Bar
10200	5/16" 3/8" Dr. Hex Socket 3/8" 12 pt. STD
10202	3/8" 3/8" Dr. Hex Socket 12 pt. STD
10204	7/16" 3/8" Dr. Hex Socket 12 pt. STD
10206	1 1/2" 3/8" Dr. Hex Socket 12 pt. STD
10208	9/16" 3/8" Dr. Hex Socket 12 pt. STD
10210	5/8" 3/8" Dr. Hex Socket 12 pt. STD
10212	1 1/4" 3/8" Dr. Hex Socket 12 pt. STD
10214	3/4" 3/8" Dr. Hex Socket 12 pt. STD
10216	13/16" 3/8" Dr. Hex Socket 12 pt. STD
10274	1 1/2" 1/2" Dr. Hex Socket 12 pt. DEEP
10276	9/16" 1/2" Dr. Hex Socket 12 pt. DEEP
10282	3/4" 1/2" Dr. Hex Socket 12 pt. DEEP

Code#
16070

Code#	Description
10288	15/16" 1/2" Dr. Hex Socket 12 pt. DEEP
10292	1 1/16" 1/2" Dr. Hex Socket 12 pt. DEEP
10324	1" Long Style Open End Wrench
10326	1 1/16" Long Style Open End Wrench
10340	1 1/4" Long Style Box End Wrench
10342	5/16" Long Style Box End Wrench
10344	3/8" Long Style Box End Wrench
10346	7/16" Long Style Box End Wrench
10348	1 1/16" Long Style Box End Wrench
10350	9/16" Long Style Box End Wrench
10352	5/8" Long Style Box End Wrench
10354	1 1/16" Long Style Box End Wrench
10356	3/4" Long Style Box End Wrench
10358	13/16" Long Style Box End Wrench
10360	7/8" Long Style Box End Wrench
10362	15/16" Long Style Box End Wrench
10364	1" Long Style Box End Wrench

**Medium Telecomm.
Hot Box®**



Code#	Description
00844	3/16" x 5" Electrician's Slot Composite CG Screwdriver
00848	1/4" x 6" Electrician's Slot Composite CG Screwdriver
00850	3/8" x 7" Electrician's Slot Composite CG Screwdriver
00852	#1 x 5" Phillips Composite CG Screwdriver
00858	#2 x 7" Phillips Composite CG Screwdriver
10010	6" Needle Nose Pliers
10060	10" Crimping Pliers
10090	6" Adjustable Wrench
10094	10" Adjustable Wrench
10180	7" 3/8" Dr. Reversible Ratchet

Code#
13446

Code#	Description
10184	10" 3/8" Dr. Torque Wrench 30 - 150"
10188	3" 3/8" Dr. Extension Bar
10202	3/8" 3/8" Dr. Hex Socket 12 pt. STD
10204	7/16" 3/8" Dr. Hex Socket 12 pt. STD
10206	1 1/2" 3/8" Dr. Hex Socket 12 pt. STD
10208	9/16" 3/8" Dr. Hex Socket 12 pt. STD
10210	5/8" 3/8" Dr. Hex Socket 12 pt. STD
10212	1 1/4" 3/8" Dr. Hex Socket 12 pt. STD
10214	3/4" 3/8" Dr. Hex Socket 12 pt. STD
10216	13/16" 3/8" Dr. Hex Socket 12 pt. STD

**Large Telecomm.
Hot Box®**



Code#	Description
00813	1/8" x 3" Electrician's Slot Composite Screwdriver
00844	3/16" x 5" Electrician's Slot Composite CG Screwdriver
00847	1/4" x 4 1/2" Electrician's Slot Composite Screwdriver
00849	5/16" x 6" Electrician's Slot Composite CG Screwdriver
00850	3/8" x 7" Electrician's Slot Composite CG Screwdriver
00856	#2 x 4 1/2" Phillips Composite CG Screwdriver
10010	6" Needle Nose Pliers
10070	10" Water Pump Pliers
10094	10" Adjustable Wrench
10180	7" 3/8" Dr. Reversible Ratchet
10184	10" 3/8" Dr. Torque Wrench 30 - 150" #
10188	3" 3/8" Dr. Extension Bar
10202	3/8" 3/8" Dr. Hex Socket 12 pt. STD
10204	7/16" 3/8" Dr. Hex Socket 12 pt. STD
10206	1 1/2" 3/8" Dr. Hex Socket 12 pt. STD

Code#
13443

Code#	Description
10208	9/16" 3/8" Dr. Hex Socket 12 pt. STD
10210	5/8" 3/8" Dr. Hex Socket 12 pt. STD
10212	1 1/4" 3/8" Dr. Hex Socket 12 pt. STD
10214	3/4" 3/8" Dr. Hex Socket 12 pt. STD
10218	7/8" 3/8" Dr. Hex Socket 12 pt. STD
10344	3/8" Long Style Box End Wrench
10346	7/16" Long Style Box End Wrench
10348	1 1/16" Long Style Box End Wrench
10350	9/16" Long Style Box End Wrench
10352	5/8" Long Style Box End Wrench
10354	1 1/16" Long Style Box End Wrench
10356	3/4" Long Style Box End Wrench
10358	13/16" Long Style Box End Wrench
10360	7/8" Long Style Box End Wrench
10362	15/16" Long Style Box End Wrench

**Deluxe Telecommunications
Toolbox**



- 1/8" x 3" Slotted Screwdriver
- 3/16" x 5" Slotted Screwdriver
- 1/4" x 6" Slotted Screwdriver
- # 1 x 5" Phillips Screwdriver
- # 2 x 4 1/2" Phillips Screwdriver
- 9" Linesman Pliers
- 8" Needle Nose Pliers
- 7 1/2" Diagonal Cutting Pliers

Code#

- 13449 "Briefcase" Style
- 13447 Toolbox Style

- 3/8" Drive Reversible Ratchet
- 3/8" Drive 3" Extension
- 3/8" Drive 6" Extension
- 30" - 150" # Torque Wrench
- 3/8" Drive Deep Sockets 3/8" thru 13/16"
- Box Wrenches 3/8" thru 13/16"
- Mini Flashlight

UPS Systems Kit



Code# Description

- 00813 1/8" x 3" Slotted Screwdriver
- 00846 3/16" x 6" Slotted Screwdriver
- 00848 1/4" x 6" Slotted Screwdriver
- 00849 5/16" x 6" Slotted Screwdriver
- 00852 1 x 5" Phillips Screwdriver
- 00856 2 x 4 1/2" Phillips Screwdriver
- 00895 5/16" x 6" Nut Driver
- 10180 3/8" Dr. Reversible Ratchet
- 10184 3/8" Dr. Torque Wrench
- 10188 3" Extension Bar

Code# Description

- 10223 5/16" Hex Socket DEEP
- 10222 7/16" Hex Socket DEEP
- 10224 1/2" Hex Socket DEEP
- 10304 3/8" Open End Wrench
- 10306 7/16" Open End Wrench
- 10310 9/16" Open End Wrench
- 10348 1/2" Box End Wrench
- 10350 9/16" Box End Wrench
- 20320 Clamp Sets
- 2' x 25' 7.5 kV Insulating Roll

Code#

- 00005

**Small Telecommunications
Tool Kit**



Code# Description

- 00858 2" x 7" Phillips Screwdriver
- 00895 5/16" x 6" Nut Driver
- 00897 3/8" x 6" Nut Driver
- 00898 7/16" x 6" Nut Driver
- 10092 8" Adjustable Wrench
- 10030 6" Diagonal Pliers
- 10040 Cable Cutter
- 10180 3/8" Dr. Reversible Ratchet

Code# Description

- 10188 3" Extension Bar
- 10202 3/8" Hex Socket 3/8" Drive
- 10204 7/16" Hex Socket 3/8" Drive
- 10206 1/2" Hex Socket 3/8" Drive
- 10302 5/16" Open End Wrench
- 10306 7/16" Open End Wrench
- 10422 5/16" Ratcheting Box Wrench
- 10424 7/16" Ratcheting Box Wrench

Code#

- 00500

**Global
Telecommunication Set**



Code# Description

- 00843 3/16" x 7" Electrician's Slot Composite Screwdriver
- 00856 #2 x 4 1/2" Phillips Composite CG Screwdriver
- 00893 1/4" x 6" Hollow Hex Shank Composite Nut Driver
- 00895 5/16" x 6" Hollow Hex Shank Composite Nut Driver
- 01170 10 mm 3/8" Dr. Metric Hex Socket 12 pt. STD
- 01270 10 mm 3/8" Dr. Metric Hex Socket 12 pt. DEEP
- 01310 10 mm Open End Wrench
- 01410 10 mm Box End Wrench
- 10180 7" 3/8" Dr. Reversible Ratchet
- 10188 3" 3/8" Dr. Extension Bar

Code# Description

- 10190 6" 3/8" Dr. Extension Bar
- 10222 7/16" x 3/8" Dr. Hex Socket 12 pt. DEEP
- 10224 1/2" x 3/8" Dr. Hex Socket 12 pt. DEEP
- 10204 7/16" x 3/8" Dr. Hex Socket 12 pt. STD
- 10206 1/2" x 3/8" Dr. Hex Socket 12 pt. STD
- 10306 7/16" Long Style Open End Wrench
- 10308 1/2" Long Style Open End Wrench
- 10346 7/16" Long Style Box End Wrench
- 10348 1/2" Long Style Box End Wrench

Code#

- 16065

Telecommunications
Hot Box® (56 pcs.)



Code#	Description	Code#	Description
00846	3/16" x 6" Electrician's Slot Composite CG Screwdriver	10204	7/16" 3/8" Dr. Hex Socket 3/8" 12 pt. STD
00849	5/16" x 6" Electrician's Slot Composite CG Screwdriver	10206	1/2" 3/8" Dr. Hex Socket 3/8" 12 pt. STD
00856	#2 x 4 1/2" Phillips Composite CG Screwdriver	10208	9/16" 3/8" Dr. Hex Socket 3/8" 12 pt. STD
10006	9 1/2" Linesman Pliers	10210	5/8" 3/8" Dr. Hex Socket 3/8" 12 pt. STD
10016	8" Needle Nose Pliers	10212	1 1/16" 3/8" Dr. Hex Socket 3/8" 12 pt. STD
10033	7 1/2" Diagonal Cutting Pliers	10214	3/4" 3/8" Dr. Hex Socket 3/8" 12 pt. STD
10040	9 1/2" Cable Cutters	10216	1 3/16" 3/8" Dr. Hex Socket 3/8" 12 pt. STD
10070	10" Water Pump Pliers	10218	7/8" 3/8" Dr. Hex Socket 3/8" 12 pt. STD
10123	1/2" Long Arm Hex Key	10304	3/8" Long Style Open End Wrench
10124	5/64" Long Arm Hex Key	10306	7/16" Long Style Open End Wrench
10125	3/32" Long Arm Hex Key	10308	1/2" Long Style Open End Wrench
10126	7/64" Long Arm Hex Key	10310	9/16" Long Style Open End Wrench
10127	1/8" Long Arm Hex Key	10312	5/8" Long Style Open End Wrench
10128	9/64" Long Arm Hex Key	10314	1 1/16" Long Style Open End Wrench
10129	5/32" Long Arm Hex Key	10316	3/4" Long Style Open End Wrench
10130	3/16" Long Arm Hex Key	10318	1 3/16" Long Style Open End Wrench
10131	7/32" Long Arm Hex Key	10320	7/8" Long Style Open End Wrench
10132	1/4" Long Arm Hex Key	10322	1 5/8" Long Style Open End Wrench
10134	5/16" Long Arm Hex Key	10344	3/8" Long Style Box End Wrench
10136	3/8" Long Arm Hex Key	10346	7/16" Long Style Box End Wrench
10138	7/16" Long Arm Hex Key	10348	1/2" Long Style Box End Wrench
10140	1/2" Long Arm Hex Key	10350	9/16" Long Style Box End Wrench
10180	7" 3/8" Dr. Reversible Ratchet	10352	5/8" Long Style Box End Wrench
10184	10" 3/8" Dr. Torque Wrench 30 - 150" #	10354	1 1/8" Long Style Box End Wrench
10188	3" 3/8" Dr. Extension Bar	10356	3/4" Long Style Box End Wrench
10190	6" 3/8" Dr. Extension Bar	10358	1 3/8" Long Style Box End Wrench
10200	5/16" 3/8" Dr. Hex Socket 3/8" 12 pt. STD	10360	7/8" Long Style Box End Wrench
10202	3/8" 3/8" Dr. Hex Socket 3/8" 12 pt. STD	10362	1 5/16" Long Style Box End Wrench

Code#

13542

Telecommunications
Hot Box® (68 pcs.)



Code#	Description	Code#	Description
00560	3/16" x 6" Slotted Holding Screwdriver	10134	5/16" Long Arm Hex Key
00562	#2 x 6" Phillips Holding Screwdriver	10136	3/8" Long Arm Hex Key
00843	3/16" x 7" Electrician's Slot Composite CG Screwdriver	10138	7/16" Long Arm Hex Key
00844	3/16" x 5" Electrician's Slot Composite CG Screwdriver	10140	1 1/2" Long Arm Hex Key
00848	1/4" x 6" Electrician's Slot Composite CG Screwdriver	10180	7" 3/8" Dr Reversible Ratchet
00849	5/16" x 6" Electrician's Slot Composite CG Screwdriver	10184	10" 3/8" Dr. Torque Wrench 30 - 150" #
00850	3/8" x 7" Electrician's Slot Composite CG Screwdriver	10188	3" 3/8" Drive Extension Bar
00852	#1 x 5" Phillips Composite CG Screwdriver	10190	6" 3/8" Drive Extension Bar
00856	#2 x 4 1/2" Phillips Composite CG Screwdriver	10192	12" 3/8" Drive Extension Bar
00858	#2 x 7" Phillips Composite CG Screwdriver	10200	5/16" 3/8" Dr. Hex Socket 3/8" 12 pt. STD
00859	#3 x 6" Phillips Composite CG Screwdriver	10202	3/8" 3/8" Dr. Hex Socket 12 pt. STD
00880	3/16" x 3" Hollow Hex Shank Composite Nut Driver	10204	7/16" 3/8" Dr. Hex Socket 3/8" 12 pt. STD
00882	1/4" x 3" Hollow Hex Shank Composite Nut Driver	10206	1/2" 3/8" Dr. Hex Socket 3/8" 12 pt. STD
00884	5/16" x 3" Hollow Hex Shank Composite Nut Driver	10208	9/16" 3/8" Dr. Hex Socket 3/8" 12 pt. STD
00885	1 1/32" x 3" Hollow Hex Shank Composite Nut Driver	10210	5/8" 3/8" Dr. Hex Socket 12 pt. STD
00886	3/8" x 3" Hollow Hex Shank Composite Nut Driver	10212	1 1/16" 3/8" Dr. Hex Socket 12 pt. STD
00887	7/16" x 3" Hollow Hex Shank Composite Nut Driver	10214	3/4" 3/8" Dr. Hex Socket 12 pt. STD
00888	1 1/2" x 3" Hollow Hex Shank Composite Nut Driver	10216	1 3/8" 3/8" Dr. Hex Socket 12 pt. STD
10006	9 1/2" Linesman Pliers	10218	7/8" 3/8" Dr. Hex Socket 12 pt. STD
10010	6" Needle Nose Pliers	10340	1/4" Long Style Box End Wrench
10030	6" Diagonal Cutting Pliers	10342	5/8" Long Style Box End Wrench
10040	9 1/2" Cable Cutters	10344	3/8" Long Style Box End Wrench
10070	10" Water Pump Pliers	10346	7/16" Long Style Box End Wrench
10080	Combination Stripper & Crimping Pliers	10348	1/2" Long Style Box End Wrench
10094	10" Adjustable Wrench	10350	9/16" Long Style Box End Wrench
10123	1/2" Long Arm Hex Key	10352	5/8" Long Style Box End Wrench
10124	5/64" Long Arm Hex Key	10354	1 1/8" Long Style Box End Wrench
10125	3/32" Long Arm Hex Key	10356	3/4" Long Style Box End Wrench
10126	7/64" Long Arm Hex Key	10358	1 3/8" Long Style Box End Wrench
10127	1/8" Long Arm Hex Key	10360	7/8" Long Style Box End Wrench
10128	9/64" Long Arm Hex Key	14301	14" Long 2 1/4" Mirror
10129	5/32" Long Arm Hex Key	14302	18" Long Magnetic Retrieving Tool
10130	3/16" Long Arm Hex Key	14300	Straight Blade Insulated Knife
10131	7/32" Long Arm Hex Key		
10132	1/4" Long Arm Hex Key		

Code#

16030

The Hot Box®



Pictured Code#

16029

The Hot ⚡ Box®

Code#	Description	Code#	Description
00813	1/8" x 3" Slotted Screwdriver	10180	3/8" Drive Reversible Ratchet
00866	#2 x 6" Square (Robertson) Screwdriver	10188	3/8" Drive 3" Extension
00846	3/16" x 6" Slotted Screwdriver Cushion Grip*	10190	3/8" Drive 6" Extension
00848	1/4" x 6" Slotted Screwdriver Cushion Grip*	10219	10 pcs. 5/16" - 7/8" 3/8" Dr. Hex Socket Set
00849	5/16" x 6" Slotted Screwdriver Cushion Grip*	10372	11 pcs. 1/4" - 7/8" Box End Wrench Set
00856	#2 x 4 1/2" Phillips Screwdriver Cushion Grip*	00891	3/16" x 6" Nut Driver Cushion Grip*
00858	#2 x 7" Phillips Screwdriver Cushion Grip*	00893	1/4" x 6" Nut Driver Cushion Grip*
10006	9" Linesman Pliers	00895	5/16" x 6" Nut Driver Cushion Grip*
10016	8" Needle Nose Pliers	00896	11/32" x 6" Nut Driver Cushion Grip*
10033	7 1/2" Diagonal Cutting Pliers	00897	3/8" x 6" Nut Driver Cushion Grip*
10040	9 1/2" Cable Cutters	00898	7/16" x 6" Nut Driver Cushion Grip*
10070	10" Water Pump Pliers	00899	1/2" x 6" Nut Driver Cushion Grip*
10080	Combination Stripper Crimper	10184	30" - 150# Torque Wrench*
10144	14 pcs. 1/16" - 1/2" Allen Hex Wrench Set		

Code#	Description	Code#	Description
16027	3/8" Drive Hot Box / without Torque Wrench	16051	w/ 1/2" Drive Ratchet, Sockets and Extensions
16029	3/8" Drive Hot Box w/ Torque Wrench 10184	16052	w/ 1/2" Drive Torque Wrench, 1/2" Drive Ratchet, Sockets and Extensions
16032	3/8" Drive Hot Box w/ Torque Wrench 10185	16054	w/ 1/2" Drive Metric Sockets, Nut Drivers and Extensions
16024	w/ Metric Sockets, Nut Drivers and Box Wrenches	16055	w/ 1/2" Drive Torque Wrench, Metric Sockets, Nut Drivers and Box Wrenches
16028	w/ Torque Wrench, Metric Sockets, Nut Drivers and Box Wrenches		

General Industrial Maint. Hot Box®



Code#	Description	Code#	Description
00560	Slotted Holding Screwdriver	00898	7/16" x 6" Nut Driver
00562	Phillips Holding Screwdriver	10006	9" Linesman Pliers
00843	3/16" x 7" Slotted Screwdriver	10016	8" Needle Nose Pliers
00844	3/16" x 5" Slotted Screwdriver	10033	7" Diagonal Cutting Pliers
00848	1/4" x 6" Slotted Screwdriver	10040	Cable Cutter
00852	1" x 5" Phillips Screwdriver	10060	Crimper
00858	2" x 7" Phillips Screwdriver	10070	10" Water Pump Pliers
00859	3" x 6" Phillips Screwdriver	10084	Wire Stripper
00891	3/16" x 6" Nut Driver	14300	Cable Knife
00892	7/16" x 6" Nut Driver		
00893	1/4" x 6" Nut Driver		
00895	5/16" x 6" Nut Driver		
00897	3/8" x 6" Nut Driver		

Code#	Description
00036	

Industrial Maintenance Hot Box®



Code#	Description	Code#	Description
00820	1/4" x 7" Slotted Screwdriver	10006	9" Linesman Pliers
00844	3/16" x 5" Slotted Screwdriver	10010	6" Needle Nose Pliers
00847	1/4" x 4 1/2" Slotted Screwdriver	10030	6" Diagonal Cutting Pliers
00849	5/16" x 6" Slotted Screwdriver	10060	Crimper
00852	1" x 5" Phillips Screwdriver	10080	Wire Stripper
00856	2" x 4 1/2" Phillips Screwdriver	10070	10" Water Pump Pliers
00882	1/4" x 3" Nut Driver	10130	3/16" Hex Long Arm Hex Key
00884	5/16" x 3" Nut Driver	10132	1/4" Hex Long Arm Hex Key
00886	3/8" x 3" Nut Driver	10134	5/16" Hex Long Arm Hex Key
00887	7/16" x 3" Nut Driver	10136	3/8" Hex Long Arm Hex Key
00888	1/2" x 3" Nut Driver		

Code#	Description
13047	

Petroleum/Gas
Industrial Hot Box®



Code#	Description
00813	1/8" x 3" Slotted Screwdriver
00846	3/16" x 6" Slotted Screwdriver
00850	3/8" x 7" Slotted Screwdriver
00859	#3 x 6" Phillips Screwdriver
00856	#2 x 4 1/2" Phillips Screwdriver
00864	#2 x 4 1/2" Robertson Screwdriver
00893	1/4" x 6" Nut Driver
00895	5/16" x 6" Nut Driver
00897	3/8" x 6" Nut Driver
00898	7/16" x 6" Nut Driver
00899	1/2" x 6" Nut Driver
10013	7" Needle Nose Pliers
10033	7" Diagonal Cutting Pliers
10070	10" Water Pump Pliers
10105	3/16" x 6" "T" Handle Hex Wrench
10106	7/32" x 6" "T" Handle Hex Wrench
10107	1/8" x 6" "T" Handle Hex Wrench
10108	9/16" x 6" "T" Handle Hex Wrench
10109	5/64" x 6" "T" Handle Hex Wrench
10110	3/16" x 6" "T" Handle Hex Wrench

Code#	Description
10111	7/32" x 6" "T" Handle Hex Wrench
10112	1/4" x 6" "T" Handle Hex Wrench
10114	5/8" x 6" "T" Handle Hex Wrench
10116	3/16" x 6" "T" Handle Hex Wrench
10117	7/16" x 6" "T" Handle Hex Wrench
10118	1/2" x 6" "T" Handle Hex Wrench
10180	7 3/8" Dr. Reversible Ratchet
10188	3" Extension Bar
10190	6" Extension Bar
10200	5/16" 3/8" Dr. Hex Socket 3/8" 12 pt. STD
10202	3/8" 3/8" Dr. Hex Socket 12 pt. STD
10204	7/8" 3/8" Dr. Hex Socket 12 pt. STD
10206	1/2" 3/8" Dr. Hex Socket 12 pt. STD
10208	9/16" 3/8" Dr. Hex Socket 12 pt. STD
10210	5/8" 3/4" Dr. Hex Socket 12 pt. STD
10212	11/8" 3/4" Dr. Hex Socket 12 pt. STD
10214	3/4" 3/4" Dr. Hex Socket 12 pt. STD
10216	13/16" 3/4" Dr. Hex Socket 12 pt. STD
10218	7/8" 3/4" Dr. Hex Socket 12 pt. STD
10440	Fuse Puller
14300	Knife

Code#

16031

Complete Petroleum/Gas
Industrial Hot Box®



Code#	Description
00813	1/8" x 3" Electrician's Slot Composite Screwdriver
00844	3/16" x 5" Electrician's Slot Composite CG Screwdriver
00843	3/16" x 7" Electrician's Slot Composite CG Screwdriver
00848	1/4" x 6" Electrician's Slot Composite CG Screwdriver
00880	3/16" x 3" Hollow Hex Shank Composite Nut Driver
00881	7/32" x 3" Hollow Hex Shank Composite Nut Driver
00882	1/4" x 3" Hollow Hex Shank Composite Nut Driver
00883	9/32" x 3" Hollow Hex Shank Composite Nut Driver
00884	5/16" x 3" Hollow Hex Shank Composite Nut Driver
00885	11/16" x 3" Hollow Hex Shank Composite Nut Driver
00886	3/8" x 3" Hollow Hex Shank Composite Nut Driver
01050	1.5 mm Metric Long Arm Hex Key
01051	2 mm Metric Long Arm Hex Key
01052	2.5 mm Metric Long Arm Hex Key
01053	3 mm Metric Long Arm Hex Key
01054	4 mm Metric Long Arm Hex Key
01055	5 mm Metric Long Arm Hex Key
01056	6 mm Metric Long Arm Hex Key
01057	7 mm Metric Long Arm Hex Key
01058	8 mm Metric Long Arm Hex Key
01059	9 mm Metric Long Arm Hex Key
01060	10 mm Metric Long Arm Hex Key
01170	10 mm 3/8" Dr. Metric Hex Socket 12 pt. STD
01171	11 mm 3/8" Dr. Metric Hex Socket 12 pt. STD
01172	12 mm 3/8" Dr. Metric Hex Socket 12 pt. STD
01173	13 mm 3/8" Dr. Metric Hex Socket 12 pt. STD
01174	14 mm 3/8" Dr. Metric Hex Socket 12 pt. STD
01175	15 mm 3/8" Dr. Metric Hex Socket 12 pt. STD
01176	16 mm 3/8" Dr. Metric Hex Socket 12 pt. STD
01177	17 mm 3/8" Dr. Metric Hex Socket 12 pt. STD
01178	18 mm 3/8" Dr. Metric Hex Socket 12 pt. STD
01179	19 mm 3/8" Dr. Metric Hex Socket 12 pt. STD
01180	20 mm 3/8" Dr. Metric Hex Socket 12 pt. STD
01181	21 mm 3/8" Dr. Metric Hex Socket 12 pt. STD
01182	22 mm 3/8" Dr. Metric Hex Socket 12 pt. STD
01310	10 mm Open End Wrench
01312	11 mm Open End Wrench
01314	12 mm Open End Wrench
01316	13 mm Open End Wrench
01318	14 mm Open End Wrench
01320	15 mm Open End Wrench
01322	16 mm Open End Wrench
01324	17 mm Open End Wrench
01327	22 mm Open End Wrench
01329	24 mm Open End Wrench
01332	27 mm Open End Wrench
10071	10" Water Pump Pliers

Code#	Description
10105	3/32" x 6" "T" Handle Wrench
10106	7/64" x 6" "T" Handle Wrench
10107	1/8" x 6" "T" Handle Wrench
10108	9/64" x 6" "T" Handle Wrench
10109	5/16" x 6" "T" Handle Wrench
10110	3/32" x 6" "T" Handle Wrench
10111	7/32" x 6" "T" Handle Wrench
10112	1/4" x 6" "T" Handle Wrench
10114	5/16" x 6" "T" Handle Wrench
10116	3/8" x 6" "T" Handle Wrench
10123	1/2" Long Arm Hex Key
10124	5/16" Long Arm Hex Key
10125	3/32" Long Arm Hex Key
10126	7/16" Long Arm Hex Key
10127	1/8" Long Arm Hex Key
10128	9/64" Long Arm Hex Key
10129	5/16" Long Arm Hex Key
10130	3/32" Long Arm Hex Key
10131	7/32" Long Arm Hex Key
10132	1/4" Long Arm Hex Key
10134	5/4" Long Arm Hex Key
10136	3/8" Long Arm Hex Key
10138	7/16" Long Arm Hex Key
10140	1/2" Long Arm Hex Key
10180	7" 3/8" Dr. Reversible Ratchet
10185	15" 3/8" Dr. Torque Wrench 150-750" #
10188	3" 3/8" Dr. Extension Bar
10190	6" 3/8" Dr. Extension Bar
10192	12" 3/8" Dr. Extension Bar
10202	3/8" 3/8" Dr. Hex Socket 12 pt. STD
10204	7/16" 3/8" Dr. Hex Socket 12 pt. STD
10206	1/2" 3/8" Dr. Hex Socket 12 pt. STD
10208	9/16" 3/8" Dr. Hex Socket 12 pt. STD
10210	5/8" 3/8" Dr. Hex Socket 12 pt. STD
10212	11/16" 3/8" Dr. Hex Socket 12 pt. STD
10214	3/4" 3/8" Dr. Hex Socket 12 pt. STD
10340	1/4" Long Style Box End Wrench
10342	5/16" Long Style Box End Wrench
10344	3/8" Long Style Box End Wrench
10346	7/16" Long Style Box End Wrench
10348	1/2" Long Style Box End Wrench
10350	9/16" Long Style Box End Wrench
10352	5/8" Long Style Box End Wrench
10354	11/16" Long Style Box End Wrench
10356	3/4" Long Style Box End Wrench
10358	13/16" Long Style Box End Wrench
10360	7/8" Long Style Box End Wrench

Code#

16038

Local Distributor:

Electro  *Safe*®




Certified Insulated Products

Tel: (800) 443-1196 • E-mail insulatedtools@aol.com • www.insulatedtools.com

Form #0705